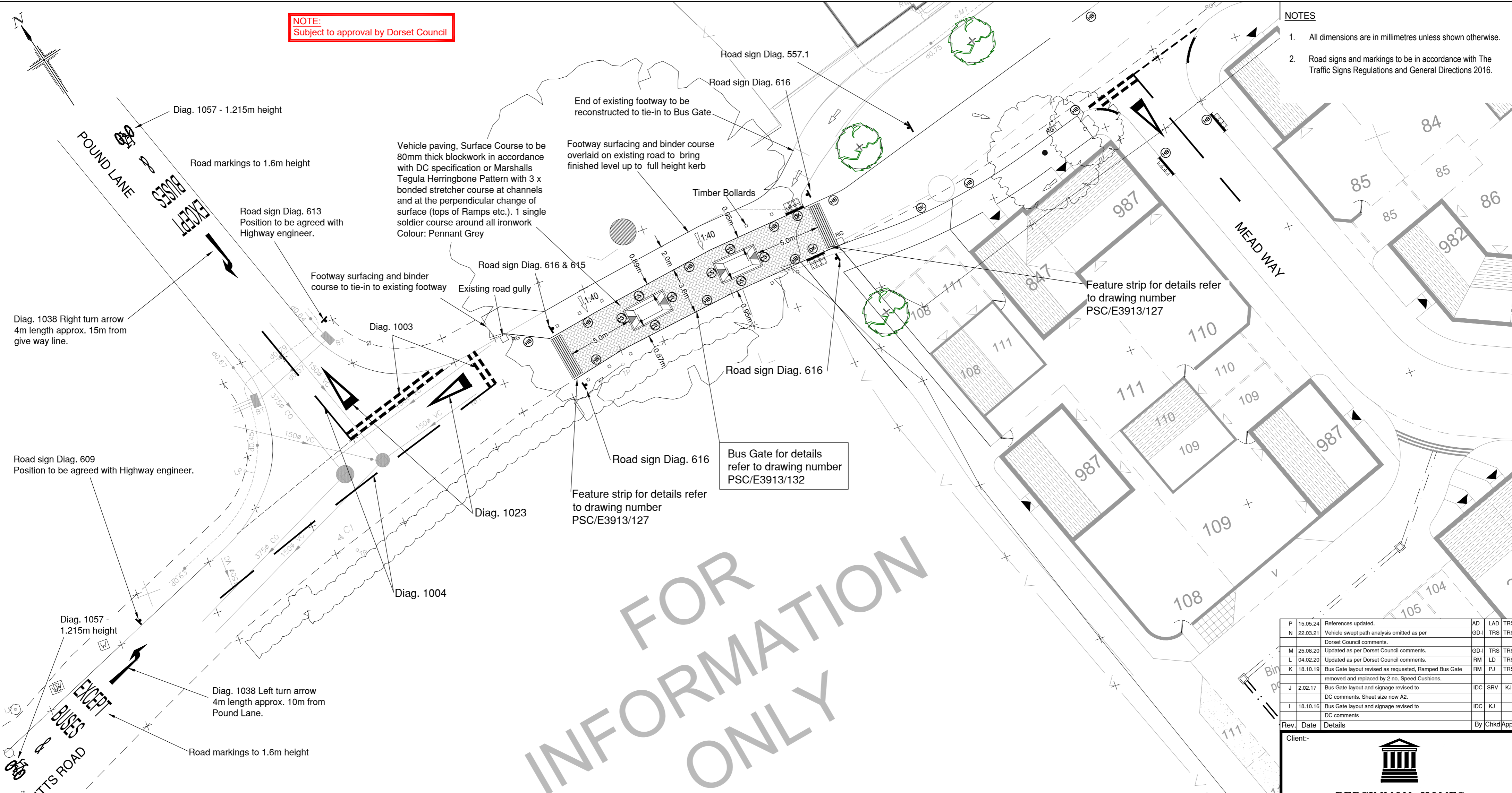


**NOTE:**  
Subject to approval by Dorset Council

- NOTES**
- All dimensions are in millimetres unless shown otherwise.
  - Road signs and markings to be in accordance with The Traffic Signs Regulations and General Directions 2016.



Diag. 1038 Right turn arrow  
4m length approx. 15m from  
give way line.

Road sign Diag. 609  
Position to be agreed with Highway engineer.

Diag. 1057 -  
1.215m height

Diag. 1038 Left turn arrow  
4m length approx. 10m from  
Pound Lane.

Road markings to 1.6m height

Vehicle paving, Surface Course to be  
80mm thick blockwork in accordance  
with DC specification or Marshalls  
Tegula Herringbone Pattern with 3 x  
bonded stretcher course at channels  
and at the perpendicular change of  
surface (tops of Ramps etc.). 1 single  
soldier course around all ironwork  
Colour: Pennant Grey

Footway surfacing and binder course  
overlaid on existing road to bring  
finished level up to full height kerb

Footway surfacing and binder  
course to tie-in to existing footway

Existing road gully

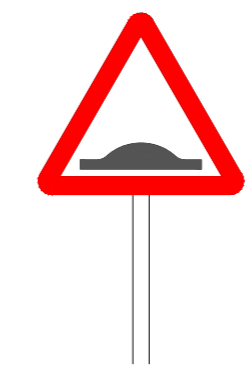
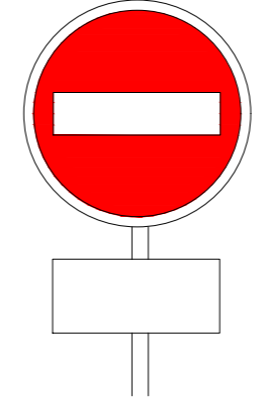
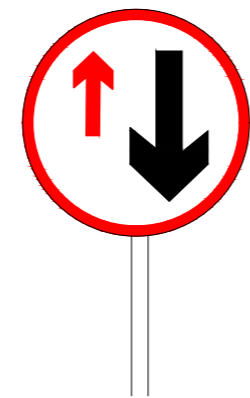
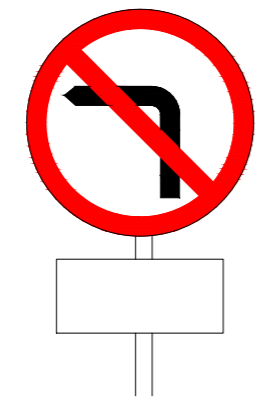
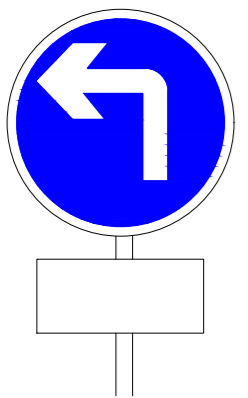
Timber Bollards

Bus Gate for details  
refer to drawing number  
PSC/E3913/132

Feature strip for details refer  
to drawing number  
PSC/E3913/127

Feature strip for details refer  
to drawing number  
PSC/E3913/127

FOR INFORMATION ONLY



600mm dia. road sign to Diag. 609 of  
The Traffic Signs Regulations and Directions 2016.  
Externally illuminated (LED) not to be part night-lit.  
Mounted on single post with 2.1m clear headroom.  
With supplementary plate "Except Buses and Cycles"

600mm dia. road sign to Diag. 613 of  
The Traffic Signs Regulations and Directions 2016.  
Externally illuminated (LED) not to be part night-lit.  
Mounted on single post with 2.1m clear headroom  
With supplementary plate "Except Buses and Cycles"

600mm dia. road sign to Diag. 615 of  
The Traffic Signs Regulations and Directions 2016.  
Externally illuminated (LED) not to be part-night lit  
Mounted on single post with 2.1m clear headroom.

600mm dia. road sign to Diag. 616 of  
The Traffic Signs Regulations and Directions 2016.  
Externally illuminated (LED) not to be part-night lit.  
Mounted on single post with 2.1m clear headroom.  
With supplementary plate "Except Buses and Cycles"


Road Sign Diag 557.1 - 600mm  
The Traffic Signs Regulations and Directions 2016.  
Externally illuminated (LED) not to be part-night lit.  
Mounted on single post with 2.1m clear headroom.

**Kerb Types:-**

- (HB) Pcc full height kerb
- (DK) Pcc dropped kerb
- (CS) Pcc flush kerb

P	15.05.24	References updated.	AD	LAD	TRS
N	22.03.21	Vehicle swept path analysis omitted as per Dorset Council comments.	GD-	TRS	TRS
M	25.08.20	Updated as per Dorset Council comments.	GD-	TRS	TRS
L	04.02.20	Updated as per Dorset Council comments.	RM	LD	TRS
K	18.10.19	Bus Gate layout revised as requested, Flanged Bus Gate removed and replaced by 2 no. Speed Cushions.	RM	PJ	TRS
J	2.02.17	Bus Gate layout and signage revised to DC comments. Sheet size now A2.	IDC	SRV	KJ
I	18.10.16	Bus Gate layout and signage revised to DC comments	IDC	KJ	
Rev.	Date	Details		By	Chkd/Appd

Client:-



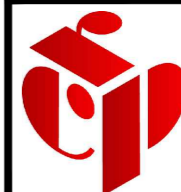
**PERSIMMON HOMES**

Site:- **THE SQUARE EAST SHAFTESBURY**

Drawing Title:- **BUS GATE LOCATIONS**

Date: July 2016 Scales: 1:200 at A2  
 Drawn: IDC Checked: Approved: KMR  
 Drawing No. **PSC/E3913/126 P**

**FOR INFORMATION ONLY**



**Rogers Cory Partnership**  
 Civil, Structural and Architectural Consultants  
 the old school old school road  
 hook hamphshire rg27 9nj  
 t 01256 769269 e mail@rcpconsultants.co.uk  
 f 01256 763048 w rcpconsultants.co.uk