



Dorset Council Community Governance Review Consultation Paper

Contents

Page No.

SECTION 1

1	Introduction	1
2	What is a Community Governance Review?	1
3	Why is the Council undertaking a Review?	2
4	Who will undertake the Review?	3
5	Timetable for the Review	3
6	Electorate forecasts for the Council	4
7	Representations	4
8	Publication of responses – confidentiality and data protection	5
9	How will the results be disseminated?	5

SECTION 2

10	Scope of the Review	6
	Parish areas	
11	Creating, merging and abolishing parishes, alternative styles for parishes, boundary alterations between existing parishes	7
12	Grouping parishes under a common council or dissolving groups	7
	Electoral arrangements	
13	Whether to have a parish council or not	8
14	The size of the council	8
15	Warding of parishes	9
16	Drawing up appropriate ward boundaries	10
17	Allocating councillors to wards	10
18	Ward names	10

APPENDICES

Appendix 1	Consultation timetable	11
Appendix 2	List of grouped parishes	12
Appendix 3	Electorate data and projected 5 year forecast	13
Appendix 4	Options for consultation	15
Appendix 5	Consultation response form	28

SECTION 1

1 Introduction

- 1.1 Dorset Council, at its meeting on 20 October 2022, resolved that a Community Governance Review be conducted for the parishes forming the Vale of Allen Parish Council, Chickerell, Weymouth and the parishes forming the Winterborne Farringdon Parish Council, in accordance with Part 4, Chapter 3 of the Local Government and Public Involvement in Health Act 2007. No other parishes will be considered as part of this Review, other than those impacted by the proposals in respect of the parishes listed. The Council is required to have regard to the Guidance on Community Governance Reviews issued by the Secretary of State for Communities and Local Government.
- 1.2 This consultation document is divided into two sections. Section 1 provides background to the Review process and explains how the Review will be undertaken. Section 2 details the specific topics for consideration by the Review to assist those wishing to make representations.

2 What is a Community Governance Review?

- 2.1 A Community Governance Review is a legal process whereby the Council will consult with those living in the area, and other interested parties, on the most suitable ways of representing the people in the area identified in the Review. This means making sure that those living in the area, and other interested groups, have a say in how their local communities are represented.
- 2.2 Section 93 of the 2007 Act allows principal councils to decide how to undertake a Review, provided that it complies with certain duties in that Act, including details set out relating to consultation, the need to ensure any proposals reflect the identities and interests of the community in that area, and is effective and convenient. The Council has to publish its recommendations but the manner in which the Council consults with its residents is not prescribed.

2.3 A Review can consider one or more of the following options:

- creating, merging, altering or abolishing parishes;
- the naming of parishes and the style of new parishes and the creation of town councils;
- the electoral arrangements for parishes (for instance, the ordinary year of election; council size; the number of councillors to be elected to the council, and parish warding);
- grouping parishes under a common parish council or de-grouping parishes;
- other types of local arrangements, including parish meetings.

3 Why is the Council undertaking a Review?

3.1 The Guidance on Community Governance Reviews issued by the Secretary of State for Communities and Local Government, published in 2008, recommends that principal councils should undertake a Review of its area every 10-15 years. For some areas of the Council, a Review had not been undertaken for some time and, following the creation of Dorset Council, it was deemed appropriate to undertake a Review of all parishes within its area. This was carried out between July 2021 and July 2022. During the second period of consultation on the Review commenced in July 2021, significant alternative proposals were made for some areas in respect of which Dorset Council wished to seek the views of local residents and other interested parties. Dorset Council therefore agreed that a further Community Governance Review would be undertaken in respect of the following areas only:

- Parishes forming the Vale of Allen Parish Council namely Crichel, Gussage All Saints, Gussage St Michael, Hinton and Witchampton.
- Parishes forming the Winterborne Farringdon Parish Council namely Bincombe, Whitcombe, Winterborne Came, Winterborne Herringston and Winterborne Monkton.
- Chickerell
- Weymouth

The Review offers an opportunity to put in place strong, clearly defined boundaries, tied to firm ground features, and remove any parish boundaries anomalies that may exist.

4 Who will undertake the Review?

- 4.1 Dorset Council is responsible for conducting the Review and will be responsible for making both draft and final recommendations during the process. In coming to its recommendations in the Review, the Council will need to take account of the views of local people. A full consultation process will form part of the Review to obtain these views.
- 4.2 The Council will publicise the Review by placing articles on the Council's website and on social media. The Council will also write to all relevant parish councils, the Dorset Association of Town and Parish Councils, Dorset Councillors and Members of Parliament for the areas affected.
- 4.3 The Council will be required to approve the final recommendations prior to the Community Governance Reorganisation Order being made.

5 Timetable for the review

- 5.1 An extract of the timetable for the Review is included at Appendix 1 to this consultation document. The programme and timeline may be adjusted after representations have been received from local people and bodies in response to the initial public consultation. This will allow the Council a degree of flexibility in the interests of ensuring that it manages the Review process efficiently. Any adjustments to the programme and timetable will be approved by the Council and published on its website.
- 5.2 The Review will include four key stages:-
- Stage One - Invitation of initial submissions
 - Stage Two - Consideration of initial submissions
 - Stage Three – Publication of draft recommendations for consultation
 - Stage Four – Consideration of consultation responses and publication of Final recommendations
- 5.3 This document relates to Stage One of the process and is inviting initial submissions.

6 Electorate forecasts for the Council

- 6.1 The Review will be conducted using electoral data taken from the May 2022 electoral register.
- 6.2 When the Council comes to consider the electoral arrangements of the parishes in its area, it is required to consider any change in the number or distribution of the electors which is likely to occur in the period of five years beginning with the day when the review starts. Electorate forecasts have been prepared by the Council using extant planning permissions and the Local Plan to project the five-year electorate forecast.
- 6.3 It is the Government's guidance that these forecasts should be made available to all interested parties as early as possible in the Review process, so that they are available to all who may wish to make representations. The electorate forecasts are, therefore, set out in Appendix 3 to this consultation document.

7 Representations

- 7.1 Dorset Council welcomes all representations from any person or body who may wish to comment or make proposals on any aspect of the matters under review. Representations that are received will be taken into account by judging them against the criteria in the Local Government and Public Involvement in Health Act 2007.
- 7.2 All initial submissions and representations must be made by 28 December 2022.
- 7.3 Our preferred method of response is using our online consultation which can be found at www.dorsetcouncil.gov.uk/councillors-committees-elections/elections-and-voting/community-governance-review-weymouth-and-vale-of-allen. You can also upload any accompanying maps or other documentation.
- 7.4 Alternatively, you can request a paper copy of the consultation response form by calling 01305 838299 and then sending your completed form to:

Electoral Services, Legal & Democratic Services, Dorset Council, County Hall,
Colliton Park, Dorchester, DT1 1XJ

- 7.5 It would be helpful if you could make clear in your response whether you represent an organisation or group, and in what capacity you are responding.
- 7.6 All representations received will be published, as will the reasons for accepting or rejecting any such representations. In accordance with the Act, representations received in connection with the Review will be taken into account.

8 Publication of responses – confidentiality and data protection

- 8.1 Information provided in response to this consultation, including personal information, may be published, or disclosed in accordance with the access to information regimes.
- 8.2 If you want any information you provide to be treated as confidential, you should be aware that under the Freedom of Information Act 2000, there is a statutory Code of Practice with which public authorities must comply, and which deals with, amongst other things, obligations of confidence. In view of this, it would be helpful if you could explain to us why you regard the information you have provided as confidential.
- 8.3 If we receive a request for disclosure of the information, we will take full account of your explanation, but we cannot give any assurance that confidentiality can be maintained in all circumstances. An automatic confidentiality disclaimer generated by IT systems will not, of itself, be regarded as binding on the Council.
- 8.4 Dorset Council will process your personal data in accordance with Data Protection legislation and in the majority of circumstances this will mean that your personal data will not be disclosed to third parties.

9 How will the results be disseminated?

- 9.1 The Council will publish full details on the Council's website; press releases and social media posts will be issued at key points and key documents will be on deposit at the Council's offices.

SECTION 2

10 Scope of the Review

10.1 The Review must make a series of recommendations based on the following topics, some of which are dependent upon and relate to each other:

(a) Parish areas

- creating, merging and abolishing parishes;
- alternative styles for any new parishes;
- lesser boundary alterations between existing parishes;
- changes to parish names;
- grouping parishes under a common council.

(b) Electoral arrangements

- whether to have a parish council or not;
- the size of the council;
- whether to ward the parish or not;
- drawing up appropriate ward boundaries;
- allocating councillors to wards.

10.2 Arising from the Review, it may be necessary for the Council to consider a series of 'consequential matters' (where permitted) but these are not included within this initial submission consultation document.

10.3 This consultation document is structured to address the topic areas and assist with the development of recommendations required by the Review. To assist those wishing to make representations, a series of questions are included in this document. Where applicable, these questions request respondents to indicate how they feel the proposals meet the Community Governance Review criteria. These criteria are referred to at paragraphs 2.3 of this document.

Parish areas

11 Creating, merging and abolishing parishes, alternative styles for parishes, and boundary alterations between existing parishes

11.1 The Review must make recommendations in relation to each of the existing parishes under review, including whether those parishes should or should not be abolished; or whether the area of the existing parishes should be altered, e.g. possibly due to recent housing developments. These include:

- (a) aggregating one or more parished areas;
- (b) aggregating parts of parishes;
- (c) amalgamating two or more parishes;
- (d) separating part of a parish.

11.2 The alternative styles that may be applied to parishes, in addition to parish or town, are:

- (a) Community;
- (b) Neighbourhood; and
- (c) Village.

11.3 The Review must also make recommendations as to whether or not the name of existing parishes should be changed.

12 Grouping parishes under a common council or dissolving groups

12.1 Where an application is received for a parish to be grouped with a neighbouring parish or parishes, an order to this effect may be made. However, parishes shall not be grouped without the consent of the parish meetings of each of the parishes in the proposed group.

Electoral arrangements

13 Whether to have a parish council or not

- 13.1 The guidance for undertaking Community Governance Reviews states that recommendations for the dissolution of parish councils are undesirable unless they are in cases of parishes with very low populations or where boundary changes are reordering the parish structure.
- 13.2 Where the Review makes recommendations that a parish should have a council or that an existing parish council should be retained, the Review must also make recommendations with regard to the electoral arrangements or changes to electoral arrangements.
- 13.3 'Electoral arrangements' in relation to an existing or proposed parish council are defined as:
- (a) the ordinary year of elections – the year in which ordinary elections of parish councillors are to be held. Should any proposals be made for new parishes, it is recommended that the ordinary year of elections would coincide with the ordinary elections for all other parishes within Dorset (e.g. May 2024);
 - (b) the council size – the number of councillors to be elected to the council, or (in the case of a common council) the number of councillors to be elected to the council by local electors in each parish;
 - (c) parish warding – whether the parish should be divided into wards for the purpose of electing councillors. This includes considering the number and boundaries of any such wards, the number of councillors to be elected for any such wards and the name of any such wards.

14 The size of the council

- 14.1 Council size is the term used to describe the number of councillors to be elected to the whole council. The Local Government Act 1972, as amended, specifies that each parish council must have at least five councillors; there is no maximum number. There are no rules relating to the allocation of those councillors between

parish wards but each parish ward, and each parish grouped under a common parish council, must have at least one parish councillor.

- 14.2 The National Association of Local Councils published guidelines (circular 1126) suggesting that the minimum number of councillors for any parish council should be seven, with a maximum of twenty-five.
- 14.3 The council size should be considered on its own merits, having regard to its population, geography and the pattern of communities. Regard should be given to the difficulty of attracting sufficient candidates to stand for election. In some parishes, this has led to repeated uncontested elections and/or a need to co-opt members in order to fill vacancies. A parish council's budget and planned or actual level of service provision may also be important factors in reaching conclusions on council size.
- 14.4 A series of datasets and other information regarding the parishes is set out at Appendix 3 to this document. This information should be taken into account when considering the electoral arrangements.

15 Warding of parishes

- 15.1 Parish warding is the division of a parish into wards for the purpose of electing councillors. This includes the number and boundaries of any wards, the number of councillors to be elected for any ward and the names of wards.
- 15.2 In considering whether or not a parish should be divided into wards, consideration must be given to whether:
- (a) the number, or distribution of the local government electors for the parish would make a single election of councillors impracticable or inconvenient; and
 - (b) it is desirable that any area or areas of the parish should be separately represented.
- 15.3 Each case should be considered on its merits, and on the basis of the information and evidence provided during the course of the Review.

16 Drawing up appropriate ward boundaries

- 16.1 In reaching conclusions on the boundaries between parish wards, the Review should take account of community identity and interests in the area and consider whether any particular ties or linkages might be broken by the drawing of particular ward boundaries.

17 Allocating councillors to wards

- 17.1 Furthermore, if the Review decides that a parish should be warded, consideration must be given to the levels of representation between each ward. It is an important democratic principle that each person's vote should be of equal weight so far as possible, having regard to other legitimate competing factors, when it comes to the election of councillors.
- 17.2 Whilst there is no provision in legislation that each parish councillor should represent a similar number of electors, guidance suggests that it is not in the interests of effective and convenient local government, either for voters or councillors, to have significant differences in levels of representation between different parish wards. Such variations could make it difficult, in workload terms, for councillors to adequately represent the interests of residents. There is also a risk that where one or more wards of a parish are over-represented by councillors, the residents of those wards (and their councillors) could be perceived as having more influence than others on the council.
- 17.3 Where a Community Governance Review recommends that two or more parishes should be grouped under a common parish council, then the Review must take into account the same considerations when considering the number of councillors to be elected by each parish within the group.

18 Ward names

- 18.1 Where parish wards are proposed, the Review should give some thought to existing local or historic places so that, where appropriate, these are reflected, and there should be a presumption in favour of ward names proposed by local interested parties.

Community Governance Review - Consultation Timetable

Stage	Date/Timeline	Timescale	Outline of Activity
Stage One – Invite initial submissions	1 November 2022 – 28 December 2022	8 weeks	Initial submissions invited.
Stage Two – Consider submissions	3 January 2023 – 3 February 2023	4 weeks	Consider any submissions/ representations and prepare report of draft recommendations for Full Council on 14 February 2023.
Stage Three – Publish Draft Recommendations	20 February 2023 - 17 April 2023	8 weeks	Publish draft recommendations for further consultation.
Stage Four – Final Recommendations	18 April 2023 - 2 May 2023 Full Council Meeting 11 May 2023	2 weeks	Consideration of further submissions received and prepare final recommendations. Council resolves to make a Reorganisation Order.
Implementation	1 April 2024		Effective date of any changes to parish/town boundaries and electoral arrangements.

Grouped Parishes List

- Vale of Allen Parish Council
 - Crichel Parish
 - Gussage All Saints Parish
 - Gussage St Michael Parish
 - Hinton Parish
 - Witchampton Parish

- Winterborne Farringdon Parish Council
 - Bincombe Parish
 - Whitcombe Parish
 - Winterborne Came Parish
 - Winterborne Herringston Parish
 - Winterborne Monkton

Appendix 3

Note: This table replaced an earlier version which omitted data for Littlemoor. This was substituted on 12 January 2023.

Electorate Data and Projected 5 Year Forecast

Polling District	Parish	Parish Ward (if applicable)	Parish Group (if applicable)	Number of Councillors (if applicable)	Electorate 2022	Projected Electorate 2027	Electors per Councillor 2027
CRC1	Crichel		Vale of Allen	2	202	211	106
CRC2	Gussage All Saints		Vale of Allen	2	177	200	100
CRC3	Gussage St Michael		Vale of Allen	2	158	167	84
STA2	Hinton		Vale of Allen	4	351	347	87
CRC15	Witchampton		Vale of Allen	4	320	329	82
CHC1, CHC2	Chickerell	Charlestown & Littlesea		4	1733	1780	445
CHC3, CHC4	Chickerell	Chickerell Village		6	3205	4179	697
LIT2, LIT3	Weymouth	Littlemoor		2	2839	3063	1532
MEL1, MEL2, RAD5	Weymouth	Melcombe Regis		3	4519	5171	1724
LIT4, LIT5, LIT6	Weymouth	Preston		3	4350	4420	1473
RAD3, RAD4	Weymouth	Radipole		2	3013	2896	1448
LIT1, UPB1, UPB2	Weymouth	Upwey and Broadwey		2	2845	2961	1481
WST2, WST3	Weymouth	Westham East		2	2770	2922	1461
RAD2, RAD6, WST1, WST6	Weymouth	Westham North		3	4041	4086	1362
CHC5, WST4, WST5	Weymouth	Westham West		2	3044	3621	1811

Polling District	Parish	Parish Ward (if applicable)	Parish Group (if applicable)	Number of Councillors (if applicable)	Electorate 2022	Projected Electorate 2027	Electors per Councillor 2027
CHC6, RAD1, UPB3	Weymouth	Wey Valley		2	2956	3264	1632
ROD1	Weymouth	Weymouth East		2	2576	3226	1613
ROD2, ROD3, ROD4, ROD5	Weymouth	Weymouth West		3	3900	4030	1343
ROD6, ROD7, ROD8	Weymouth	Wyke Regis		3	4298	4359	1453
WIB7	Whitcombe		Winterborne Farringdon	2	20	19	10
WIB9	Winterborne Came		Winterborne Farringdon	3	37	36	12
WIB10	Winterborne Herringston		Winterborne Farringdon	2	23	22	11
WIB11	Winterborne Monkton		Winterborne Farringdon	3	58	61	20
WIB1, WIB2	Bincombe		Winterborne Farringdon	3	435	843	281

Vale of Allen

Parishes included: Crichel, Gussage All Saints, Gussage St Michael, Hinton, Witchampton

Dorset Council initially proposed “no change” to the parishes included in the Vale of Allen Grouped Parish Council area as the submission from the Parish Council was unclear and the proposed boundary lines didn’t appear to follow geographical landmarks or clearly defined boundaries in their submission.

However, during the second public consultation phase the Parish Council presented clearer proposals (deleting a number from their initial proposal). The revised proposals do suggest an alternative that would seem to improve community governance. Letters of support were received from 5 residents supporting the amended proposal of the Parish Council.

However, Council agreed that other parishes affected by the proposals had not had an opportunity to comment and therefore the proposals should not be given effect by the first CGR and should be subject to further review.

The proposals are set out below:

Pamphill to Witchampton (Hamlet of Bradford)

Bradford lies at the Northern extremity of Pamphill Ward and is about 1 mile from the village of Witchampton. A number of Bradford residents have raised what they believe are the historical inconveniences of being part of Pamphill rather than Witchampton.

The 11 properties (25 electors) that are within this hamlet have no vehicular access other than through the village of Witchampton but vote in local and parliamentary elections in Pamphill. Any children of primary school age are in the Pamphill CE Primary school catchment area rather than that of Witchampton CE Primary School which is 1 mile distant. The access to Pamphill by road is about 10 miles either via Wimborne or the True Lover’s Knot in Tarrant Keyneston which local residents find inconvenient.

In terms of social engagement the local inhabitants are said to look very much to Witchampton (church, social club, playgroups etc). The proposal does not impact on Dorset Council ward boundaries.

Hinton to Witchampton

The current boundary runs along the road through the village splitting the community between two parishes. The proposed realignment goes behind the houses with the rear garden fences being the new boundary. The proposal affects 4 properties (9 electors) but **does** cross a Dorset Council ward boundary so would necessitate a request to the Local Government Boundary Commission for England for a minor amendment if the proposal was accepted.

From Holt to Hinton – area along Petersham Lane

The current boundary runs along the road through the village splitting the community between two parishes. The proposed realignment would bring all the residents into one parish. This proposal affects 20 properties (37 electors). The proposal does not impact on Dorset Council ward boundaries.

From Hinton to Holt – Gaunts Common

The current boundary runs along the road through the village splitting the community between the 2 parishes. The proposed realignment would bring all the residents into one parish. This proposal affects 26 properties (48 electors). The proposal does not impact on Dorset Council ward boundaries.

The impact of the proposals would change electorate numbers as set out below. Electoral equality is maintained:

Pamphill & Shapwick Parish Council	Number of Councillors (if applicable)	Electorate 2022	Projected Electorate 2027	Electors per Councillor 2027
Pamphill	7	378	315	45
Shapwick	3	149	151	51
Holt Parish Council	Number of Councillors (if applicable)	Electorate 2022	Projected Electorate 2027	Electors per Councillor 2027
Furzehill	2	204	214	107
Holt	9	1118	1167	130
Vale of Allen Parish Council	Number of Councillors (if applicable)	Electorate 2022	Projected Electorate 2027	Electors per Councillor 2027
Crichel	2	202	211	106
Gussage All Saints	2	177	200	100
Gussage St Michael	2	158	167	84
Hinton	4	351	327	82
Witchampton	4	320	363	91

Dorset Council would welcome views on the proposals sought by the Vale of Allen Parish Council before it makes draft recommendations for further consultation.

Weymouth, Chickerell and Winterborne Farringdon

Parishes included in Winterborne Farringdon: Bincombe, Whitcombe, Winterborne Came, Winterborne Herringston, Winterborne Monkton.

Guidance on Community Governance Reviews and from the Local Government Boundary Commission for England is that in the interests of effective and convenient local government, principal councils should take into account the requirements imposed on the Commission when reviewing principal council boundaries ie that no unwarded parish should be divided by a district boundary, and that no parish ward should be split by such a boundary. Whilst the principal council is not subject to a strict requirement to achieve this, advice has been given that in the spirit of effective and convenient local government it might be advisable to do so.

Throughout the previous Community Governance Review, Dorset Council adopted a principle that it would not create a situation where parish boundaries were crossed by Dorset Council ward boundaries. Where changes were considered necessary for good community governance, a minor change to Dorset Council ward boundaries has been sought as few properties were affected and this would not impact on electoral equality of Dorset Council Wards (Chideock, 1 property, Netherbury 2 properties, Shipton George – 18 properties).

Bearing this principle in mind, Dorset Council welcomes views on 2 options for community governance for Weymouth that generally follow the principle of not crossing Dorset Council Ward boundaries, except where good governance could not be achieved without a small area of the proposed new parish boundary crossing the principal council ward boundary.

Option 1

Proposal follows Dorset Council Ward boundaries creating 13 Town Wards with 24 Councillors. Option 1 includes taking part of Chickerell into Weymouth and part of Bincombe into Weymouth where a large development has been granted planning permission as this is largely supported by the Parish Council. Dorset Council welcome views on the names of the proposed Wards.

Parish Ward	Number of councillors	Electorate 2021	Electorate 2026	Electors per councillor 2026
Lanehouse & Chickerell	1	2171	2199	2199
Littlemoor & Preston 1	2	3681	4089	1873
Littlemoor & Preston 2	2	4350	4350	2160
Melcombe Regis	2	3548	3970	1985
Nottingham	1	177	498	498
Radipole 1	2	3929	3870	1935

Radipole 2	2	3424	3406	1703
Rodwell & Wyke 1	2	3517	3730	1865
Rodwell & Wyke 2	2	3519	3732	1866
Rodwell & Wyke 3	2	3938	4153	2077
Upwey & Broadwey	2	3846	4246	2123
Westham 1	2	3670	3773	1887
Westham 2	2	3231	3797	1899

Option 2

Proposal following Dorset Council Ward boundaries creating 13 Town Wards with 24 Councillors. Option 2 does not include taking part of Chickereil into Weymouth but does include taking in part of Bincombe into Weymouth where a large development has been granted planning permission as this is largely supported by the Parish Council. Dorset Council welcome views on the names of the proposed Wards.

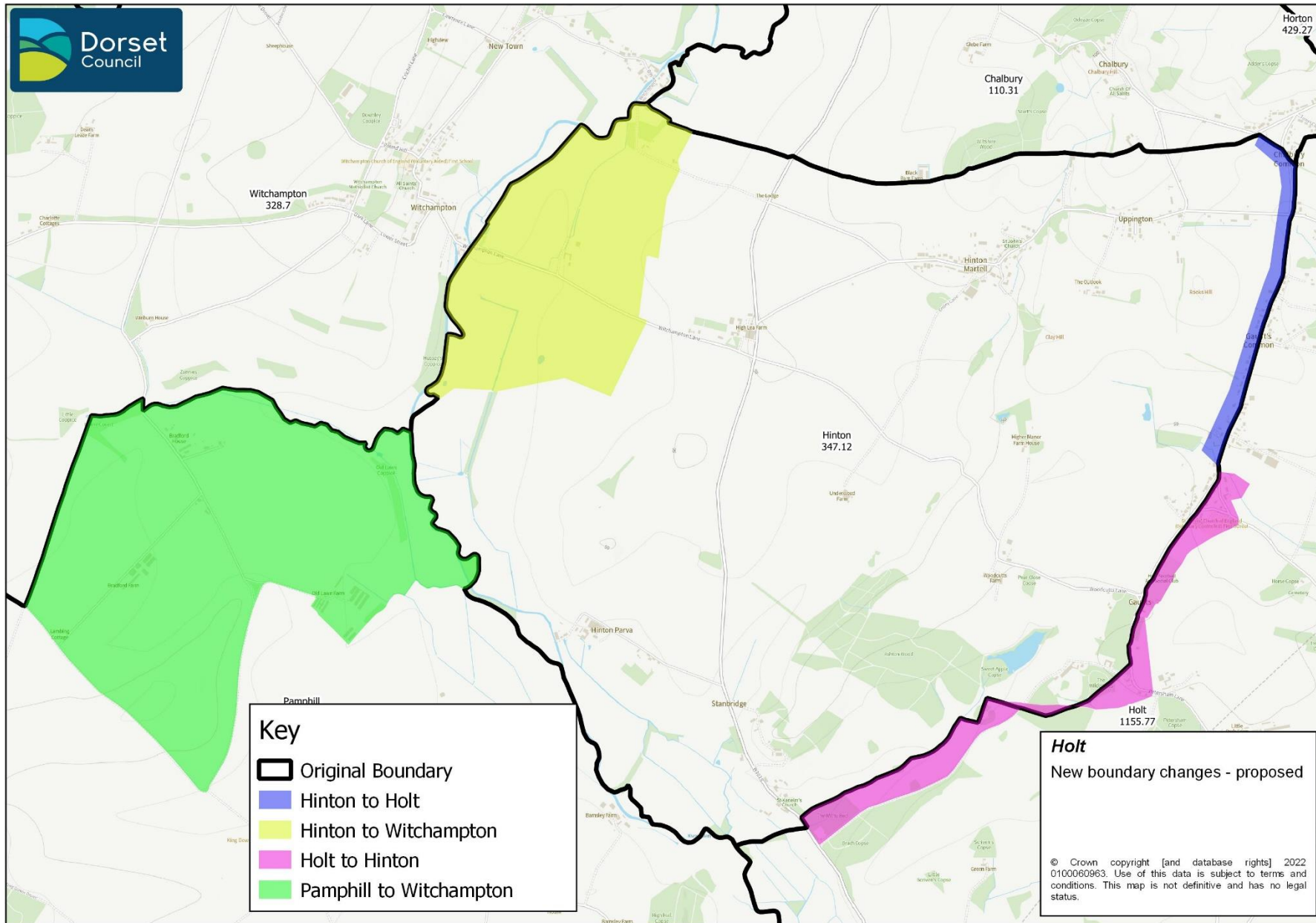
Parish Ward	Number of councillors	Electorate 2021	Electorate 2026	Electors per councillor 2026
Lanehouse	1	1113	1113	1113
Littlemoor & Preston 1	2	3681	4089	1873
Littlemoor & Preston 2	2	4350	4350	2160
Melcombe Regis	2	3548	3970	1985
Nottingham	1	177	498	498
Radipole 1	2	3929	3870	1935
Radipole 2	2	3424	3406	1703
Rodwell & Wyke 1	2	3517	3730	1865
Rodwell & Wyke 2	2	3519	3732	1866
Rodwell & Wyke 3	2	3938	4153	2077
Upwey & Broadwey	2	3846	4246	2123
Westham 1	2	3670	3773	1887
Westham 2	2	3231	3797	1899

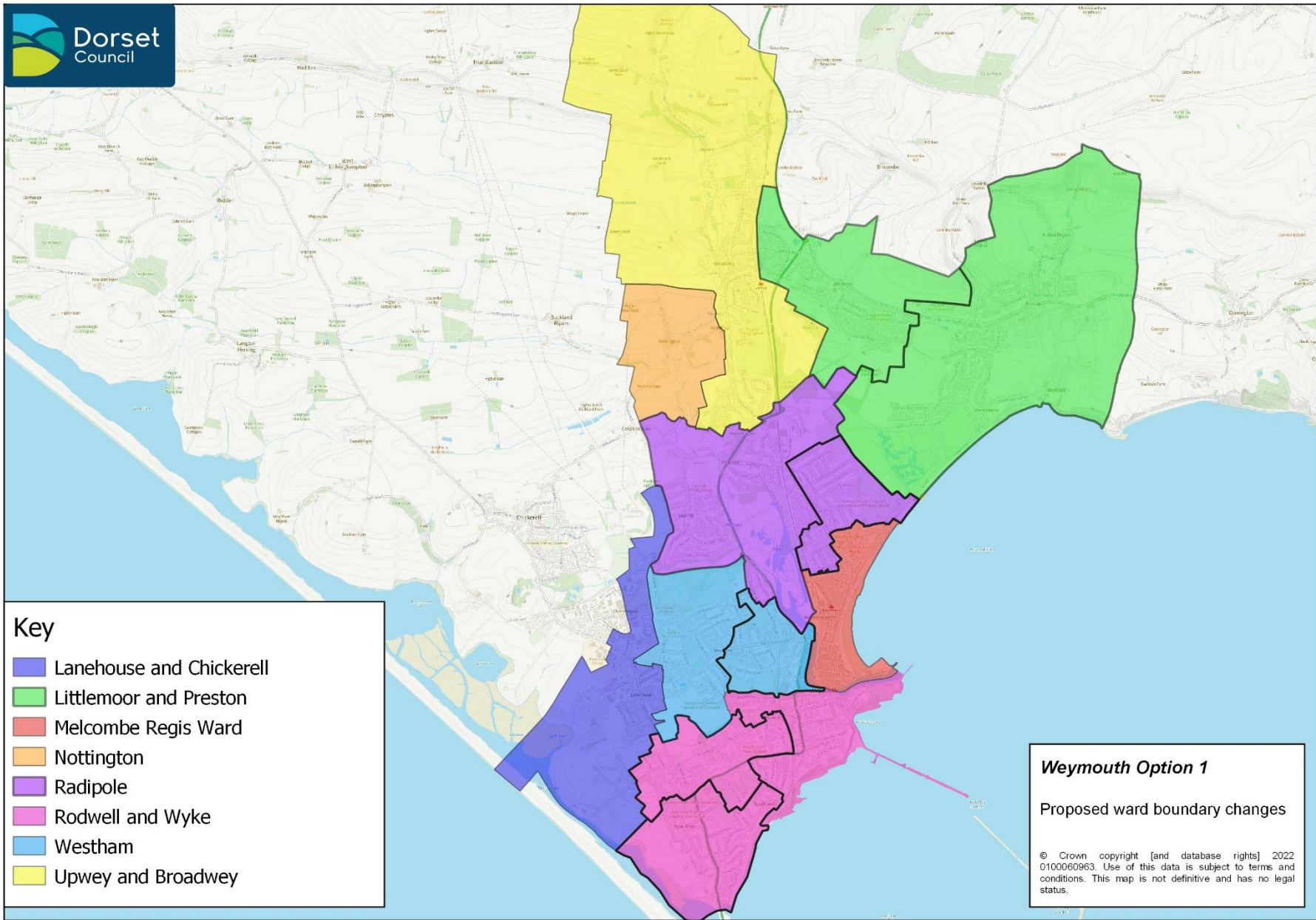
Winterborne Farringdon

Maiden Castle - Currently, the entrance and approach to Maiden Castle lies within Winterborne Monkton parish. The Winterborne Farringdon Grouped Parish Council have proposed that the whole of the Maiden castle site is moved within the parish of Winterborne Monkton as currently 2/3rd of the site is already in this parish with only approximately a 1/3rd being within the Winterborne St Martin parish. It is suggested by the Winterborne Farringdon Grouped Parish Council that such a change would not impact on Winterborne St Martin parish as there would be no issues of representation and no burden or loss of income for the affected parishes. They believe that moving the boundary to unite the castle with its landscape would allow a more coherent case for the ongoing preservation and protection of its approaches in the future.

Loscombe – Winterborne Farringdon Grouped Parish Council's view is that Loscombe protrudes discordantly into Whitcombe parish. They state that few properties are involved and whilst the Parish Council has no strong feelings, they suggest that a more coherent western boundary for Loscombe would be to follow the A352 rather than the line of the old road that was lost after the 1769 Turnpike Act diverted the road.

Dorset Council would welcome views on the proposals of Winterborne Farringdon Grouped Parish Council set out above.



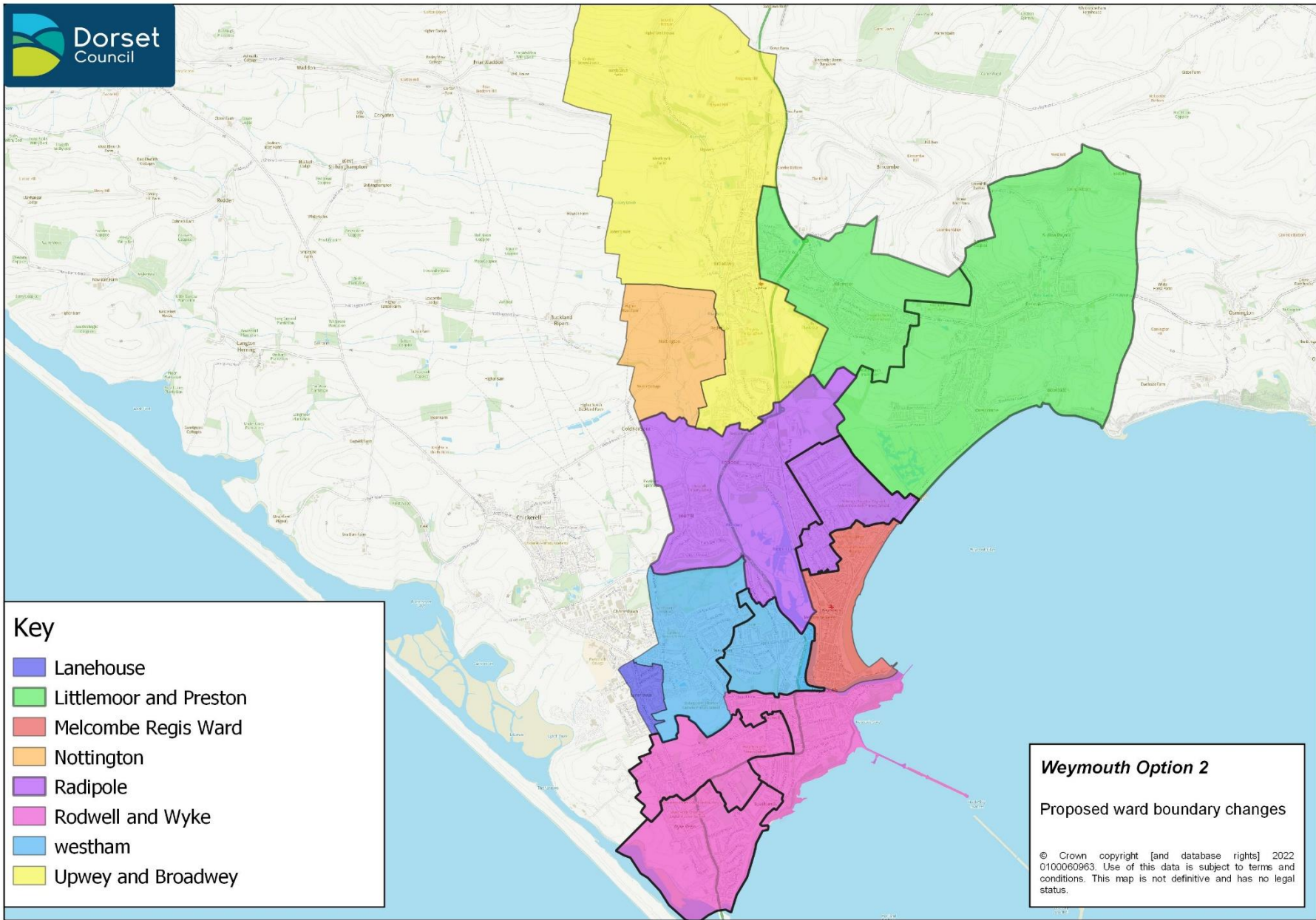


Key

- Lanehouse and Chickerell
- Littlemoor and Preston
- Melcombe Regis Ward
- Nottingham
- Radipole
- Rodwell and Wyke
- Westham
- Upwey and Broadwey

Weymouth Option 1
 Proposed ward boundary changes

© Crown copyright [and database rights] 2022 0100060963. Use of this data is subject to terms and conditions. This map is not definitive and has no legal status.



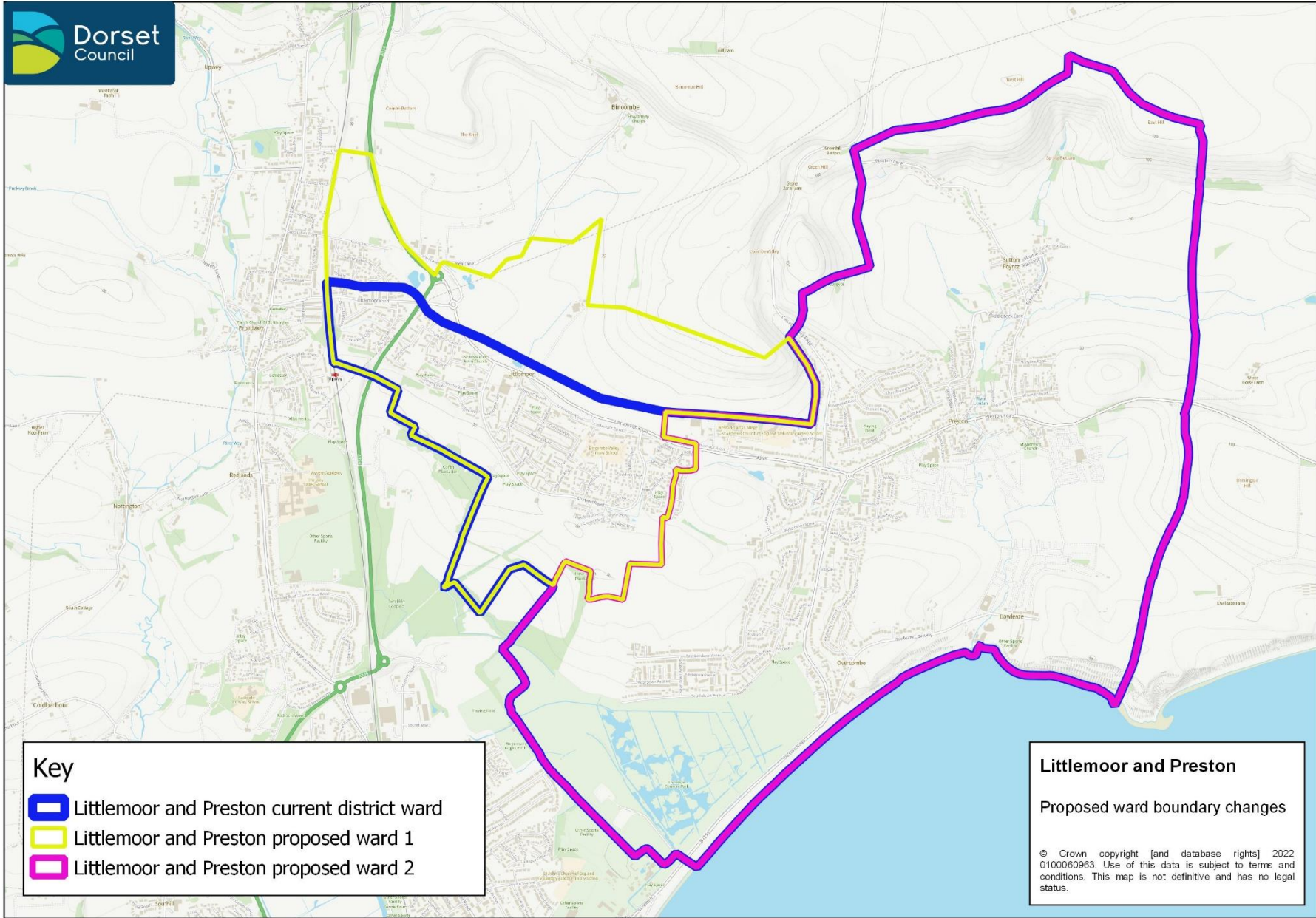
Key

- Lanehouse
- Littlemoor and Preston
- Melcombe Regis Ward
- Nottingham
- Radipole
- Rodwell and Wyke
- westham
- Upwey and Broadwey




Weymouth Option 2

Proposed ward boundary changes

© Crown copyright [and database rights] 2022 0100060963. Use of this data is subject to terms and conditions. This map is not definitive and has no legal status.



Key

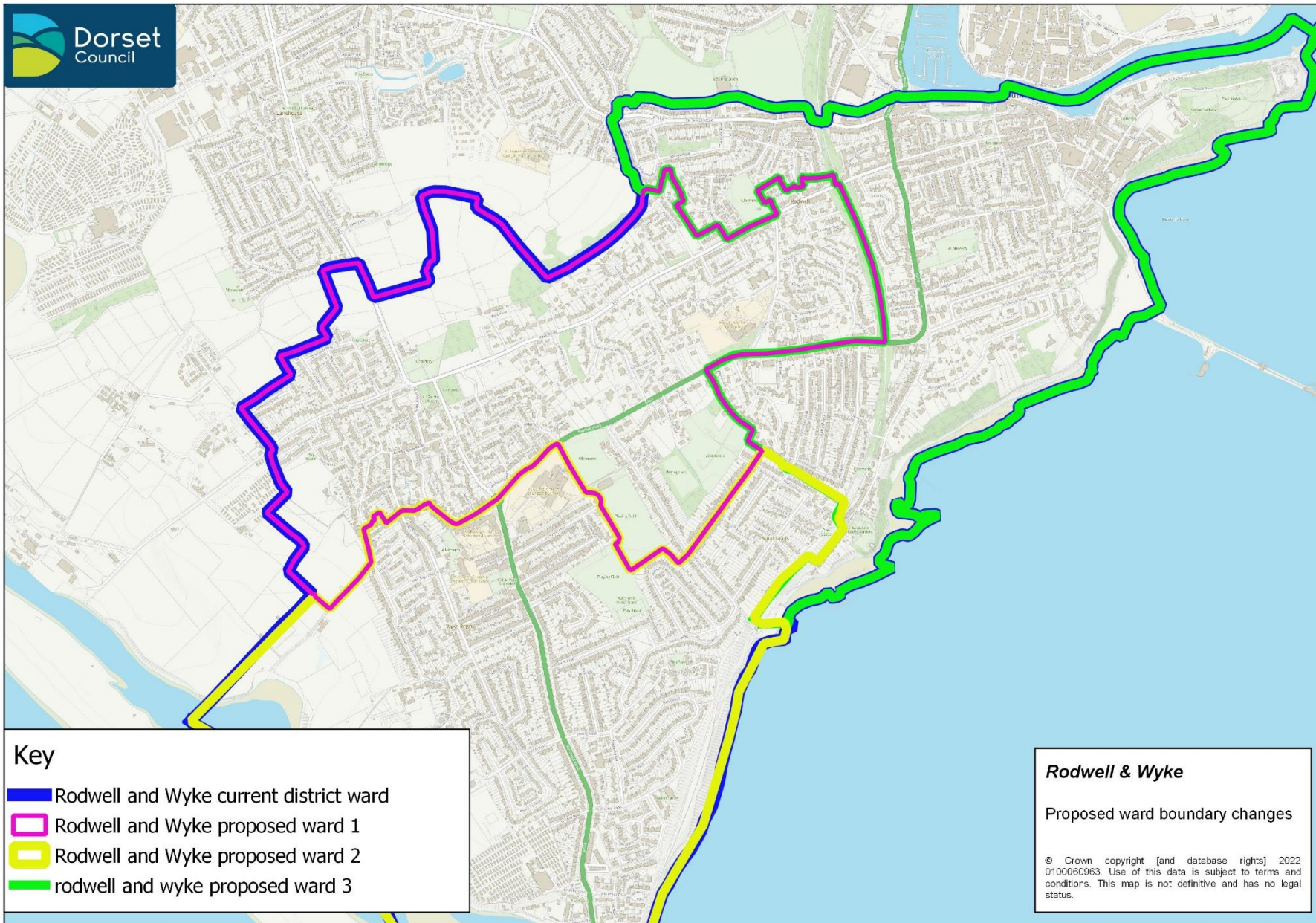
-  Littlemoor and Preston current district ward
-  Littlemoor and Preston proposed ward 1
-  Littlemoor and Preston proposed ward 2

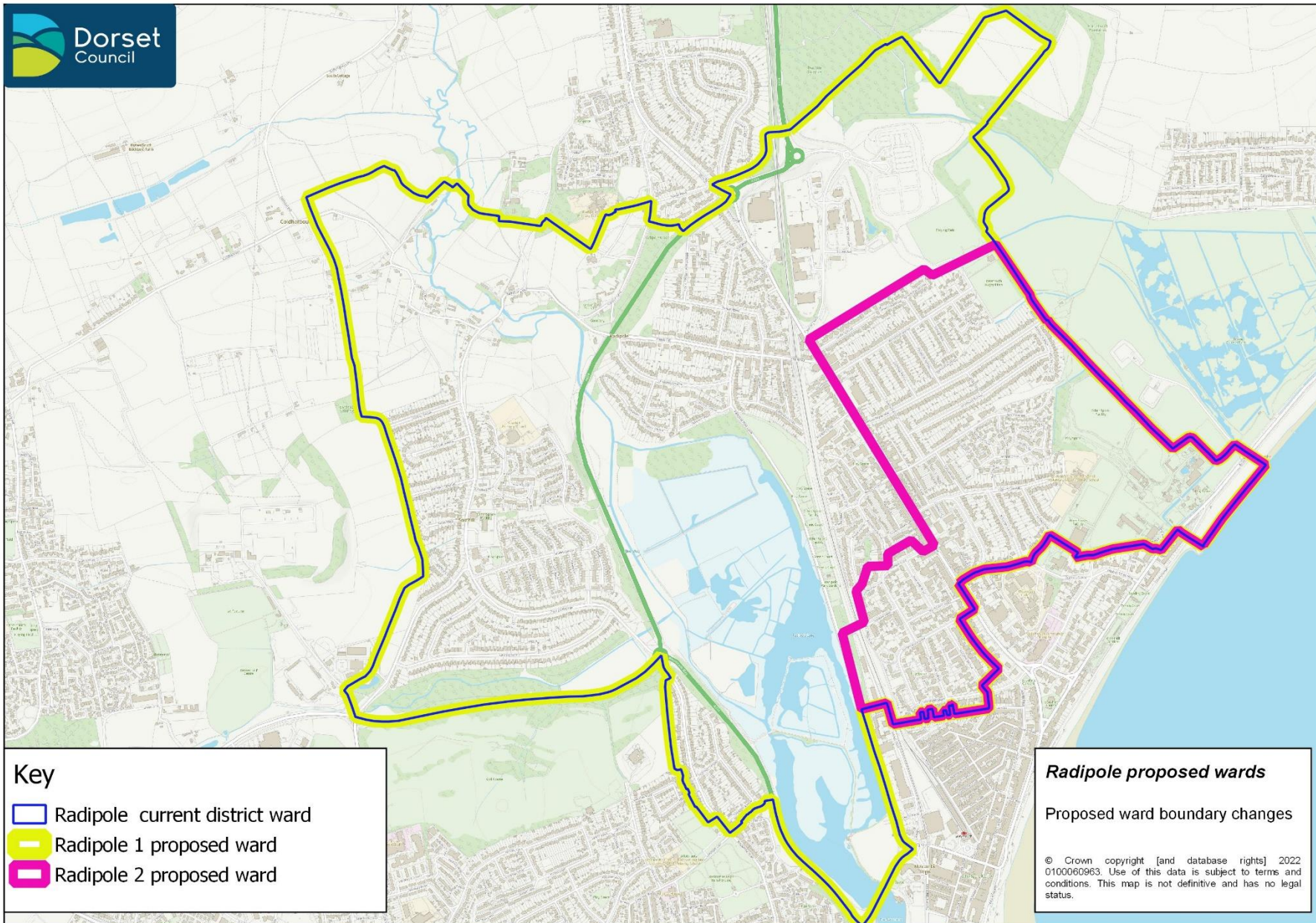
Littlemoor and Preston

Proposed ward boundary changes




© Crown copyright [and database rights] 2022 0100060963. Use of this data is subject to terms and conditions. This map is not definitive and has no legal status.

Note: This map replaced an earlier incorrect ward map for Littlemoor and Preston Ward. This was substituted on 24/11/2022





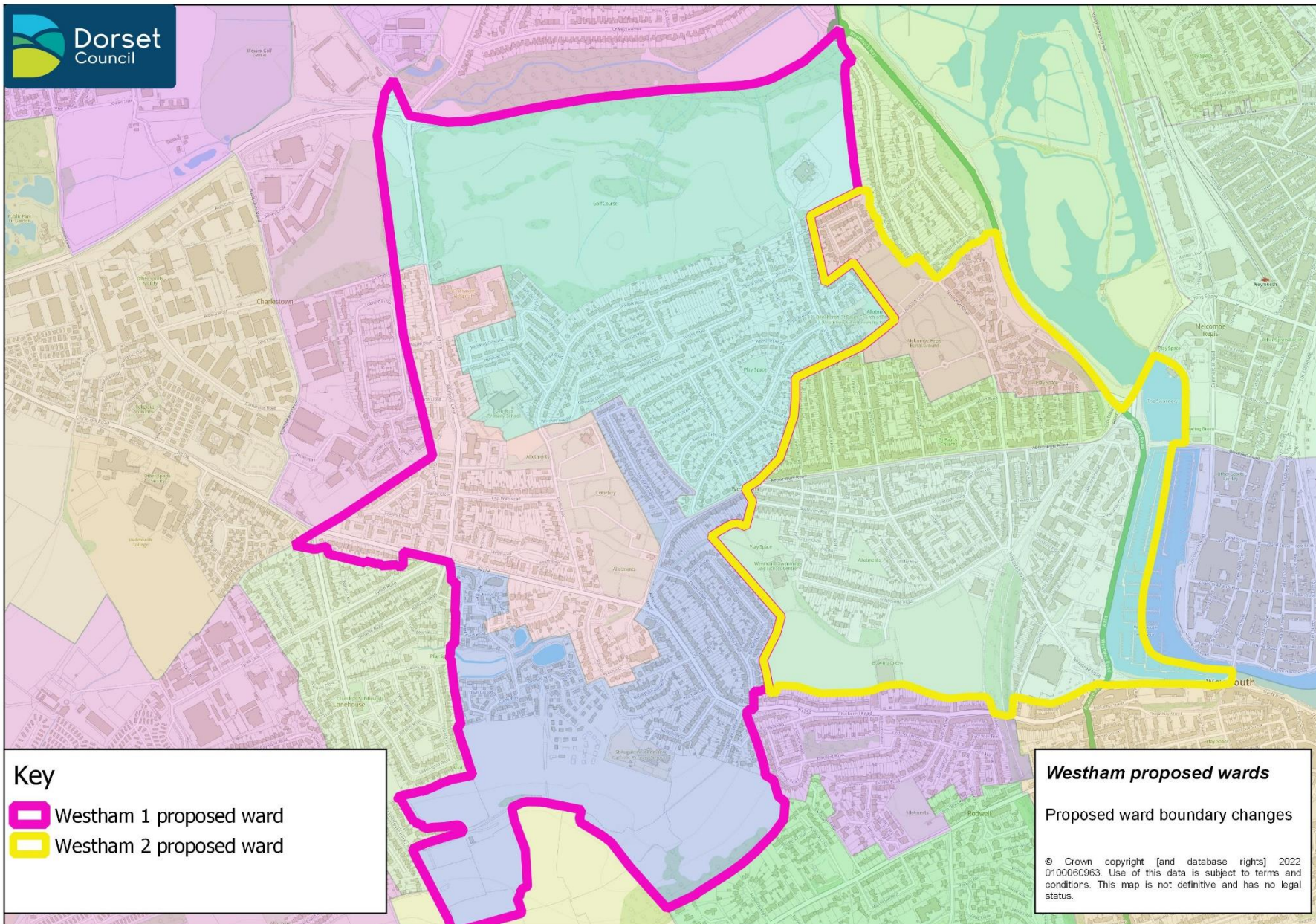
Key

-  Radipole current district ward
-  Radipole 1 proposed ward
-  Radipole 2 proposed ward



Radipole proposed wards

Proposed ward boundary changes

© Crown copyright [and database rights] 2022
0100060963. Use of this data is subject to terms and
conditions. This map is not definitive and has no legal
status.



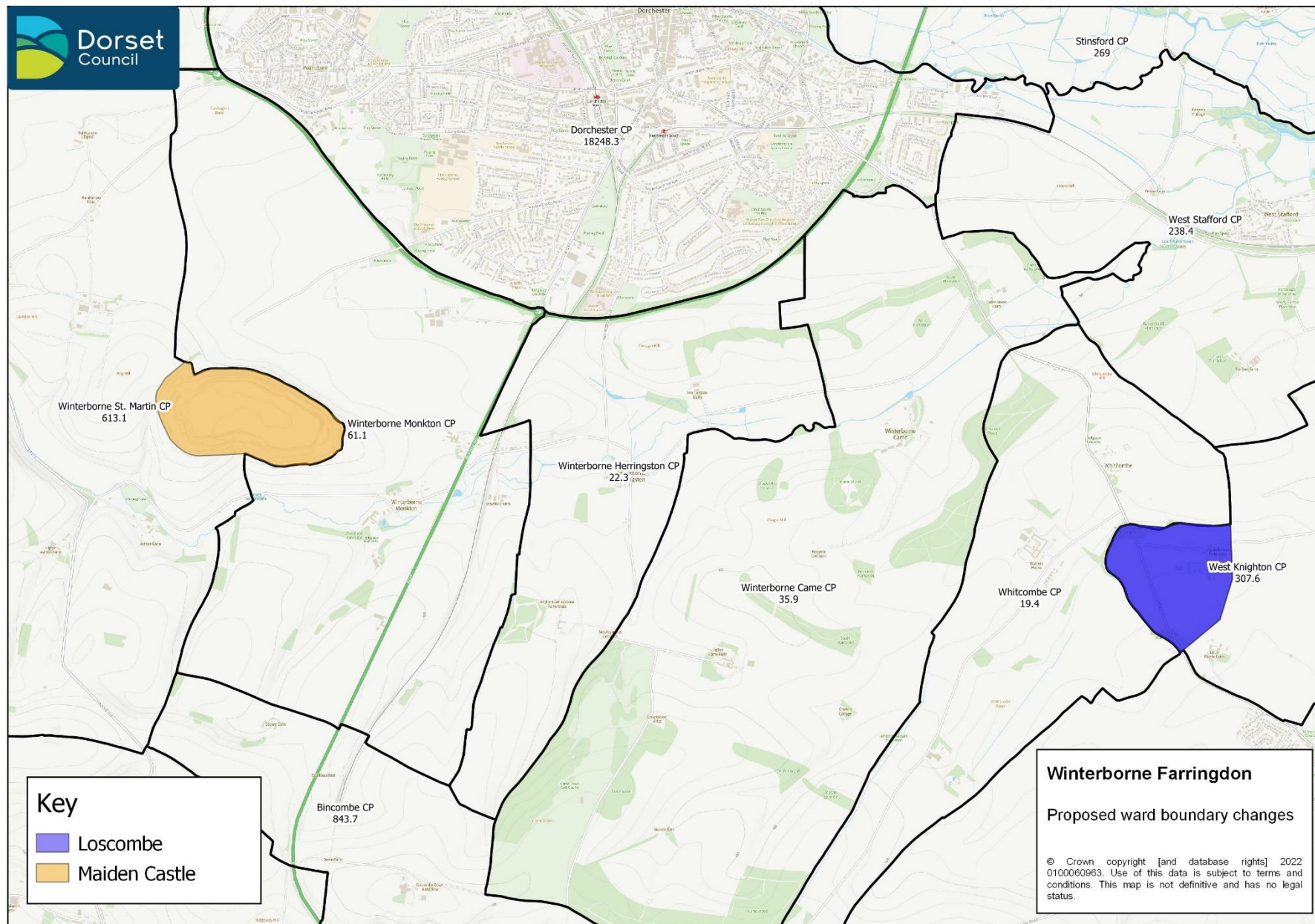
Key

-  Westham 1 proposed ward
-  Westham 2 proposed ward

Westham proposed wards

Proposed ward boundary changes

© Crown copyright [and database rights] 2022 0100060963. Use of this data is subject to terms and conditions. This map is not definitive and has no legal status.





Dorset Council

Community Governance Review

Dorset Council, at its meeting on 20 October 2022, resolved that a Community Governance Review be conducted for the parishes forming the Vale of Allen Parish Council, Chickerell, Weymouth and the parishes forming the Winterborne Farringdon Parish Council, in accordance with Part 4, Chapter 3 of the Local Government and Public Involvement in Health Act 2007. No other parishes will be considered as part of this Review, other than those impacted by the proposals in respect of the parishes listed.

Dorset Council therefore agreed that a Community Governance Review would be undertaken in respect of **the following areas only**:

- ~ Parishes forming the **Vale of Allen Parish Council** namely Crichel, Gussage All Saints, Gussage St Michael, Hinton and Witchampton.
- ~ Parishes forming the **Winterborne Farringdon Parish Council** namely Bincombe, Whitcombe, Winterborne Came, Winterborne Herringston and Winterborne Monkton.
- ~ **Chickerell**
- ~ **Weymouth**

If an alternative case is submitted, this must demonstrate that any alternative proposals are in line with the general principles of a Community Governance Review, as they are laid down in the legislation and the Guidance.

Read the separate **Consultation documentation** for the full detail, available separately.

What happens after this consultation?

The results from this consultation will be analysed and reported on.

On 14 February 2023, Full Council will receive a report considering the observations received in this Review, which will go on to form the basis of further consultation before the creation of a new Dorset Council (Parish Areas and Electoral Arrangements) Order. The Council intends that this order will be in place in good time for the next ordinary elections for the parish councils scheduled for 2024.

Please return this completed form to:

your local library or by post to:
Community Governance Review, Electoral Services,
Dorset Council, County Hall, Dorchester, Dorset DT1 1XJ

The consultation period

The consultation will run between 1 November 2022 and midnight on 28 December 2022.

If you require the documents in a different form or have any questions please contact the team

Publication of responses – confidentiality and data protection

~ Information provided in response to this consultation, including personal information, may be published, or disclosed in accordance with the access to information regimes.

~ If you want any information you provide to be treated as confidential, you should be aware that under the Freedom of Information Act 2000, there is a statutory Code of Practice with which public authorities must comply, and which deals with, amongst other things, obligations of confidence. In view of this, it would be helpful if you could explain to us why you regard the information you have provided as confidential.

~ If we receive a request for disclosure of the information, we will take full account of your explanation, but we cannot give any assurance that confidentiality can be maintained in all circumstances. An automatic confidentiality disclaimer generated by IT systems will not, of itself, be regarded as binding on the Council.

~ Dorset Council will process your personal data in accordance with Data Protection legislation and in the majority of circumstances this will mean that your personal data will not be disclosed to third parties.

About you

Your name (required)

Your email address or contact details (required)

Do you represent an organisation/group?

- Yes
- No (go on to select which proposal you are interested in on page 3)

What's the name of the organisation you represent?

Is this your organisation's official submission?

- Yes
 No

What is your role in that organisation?

This consultation

There are 3 separate proposals open for comments. In the Weymouth, Chickerell and Winterbourne Farringdon proposals there are two options put forward for consideration.

In the following section please select which proposal you wish to comment on. You can choose to comment on one proposal or several. They are listed below.

The full proposals are available in a document here and the individual sections are available when commenting on an individual proposal.

Which proposal(s) do you wish to comment on? Choose all that apply.

- Vale of Allen** (Crichel, Gussage All Saints, Gussage St Michael, Hinton, Witchampton)
- Weymouth, Chickerell and Winterborne Farringdon**
- Winterborne Farringdon** (Bincombe, Whitcombe, Winterborne Came, Winterborne Herringston, Winterborne Monkton.)

Note: If you wish to submit an alternative proposal you can do so by including maps/documents.

Vale of Allen

Parishes included: Crichel, Gussage All Saints, Gussage St Michael, Hinton, Witchampton

Dorset Council initially proposed “no change” to the parishes included in the Vale of Allen Grouped Parish Council area as the submission from the Parish Council was unclear and the proposed boundary lines didn’t appear to follow geographical landmarks or clearly defined boundaries in their submission.

However, during the second public consultation phase the Parish Council presented clearer proposals (deleting a number from their initial proposal). The revised proposals do suggest an alternative that would seem to improve community governance. Letters of support were received from 5 residents supporting the amended proposal of the Parish Council.

However, Council agreed that other parishes affected by the proposals had not had an opportunity to comment and therefore the proposals should not be given effect by the first CGR and should be subject to further review.

The proposals are set out below:

Pamphill to Witchampton (Hamlet of Bradford)

Bradford lies at the Northern extremity of Pamphill Ward and is about 1 mile from the village of Witchampton. A number of Bradford residents have raised what they believe are the historical inconveniences of being part of Pamphill rather than Witchampton.

The 11 properties (25 electors) that are within this hamlet have no vehicular access other than through the village of Witchampton but vote in local and parliamentary elections in Pamphill. Any children of primary school age are in the Pamphill CE Primary school catchment area rather than that of Witchampton CE Primary School which is 1 mile distant. The access to Pamphill by road is about 10 miles either via Wimborne or the True Lover’s Knot in Tarrant Keyneston which local residents find inconvenient.

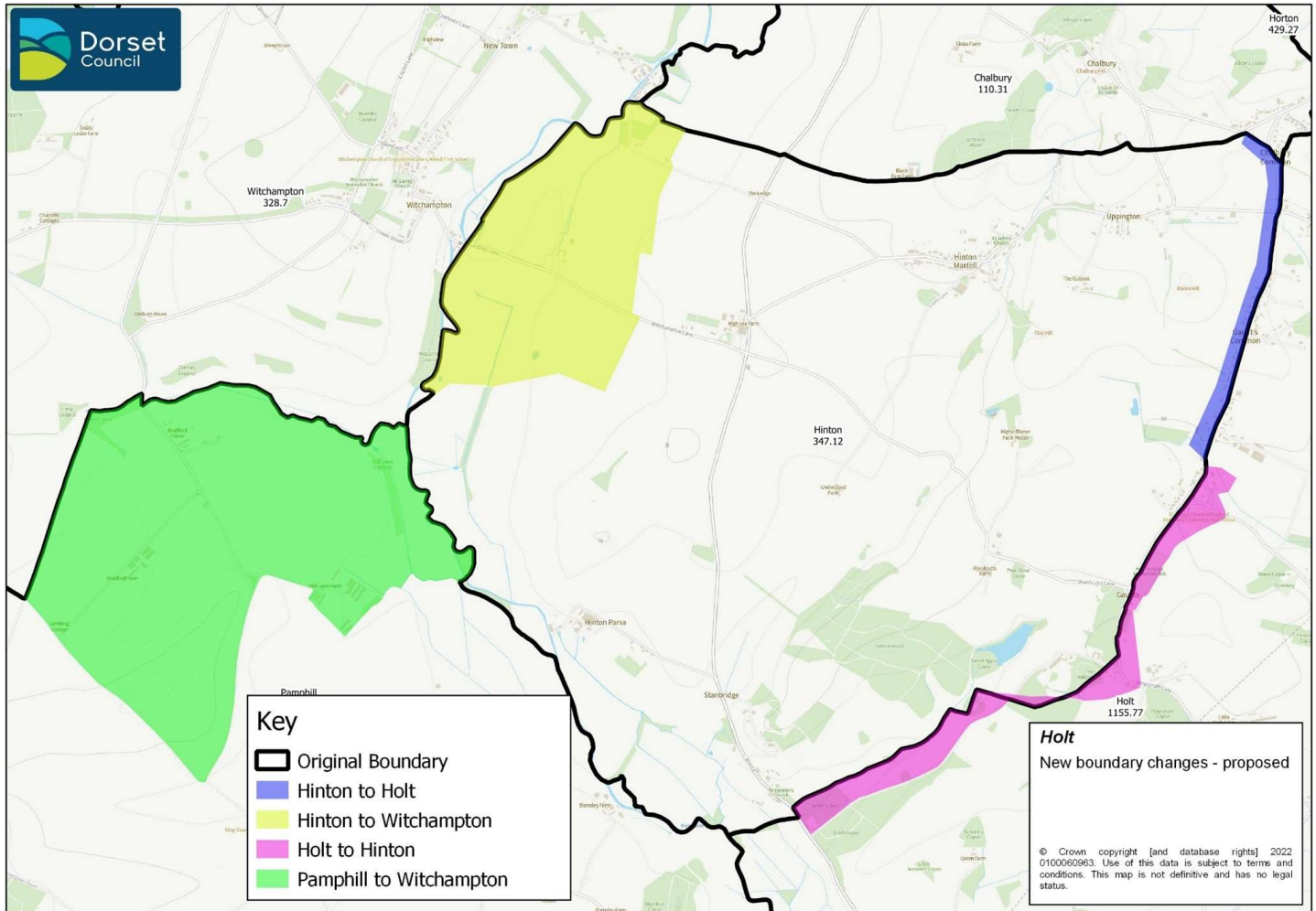
In terms of social engagement the local inhabitants are said to look very much to Witchampton (church, social club, playgroups etc). The proposal does not impact on Dorset Council ward boundaries.

Hinton to Witchampton

The current boundary runs along the road through the village splitting the community between two parishes. The proposed realignment goes behind the houses with the rear garden fences being the new boundary. The proposal affects 4 properties (9 electors) but **does** cross a Dorset Council ward boundary so would necessitate a request to the Local Government Boundary Commission for England for a minor amendment if the proposal was accepted.

From Holt to Hinton – area along Petersham Lane

The current boundary runs along the road through the village splitting the community between two parishes. The proposed realignment would bring all the residents into one parish. This proposal affects 20 properties (37 electors). The proposal does not impact on Dorset Council ward boundaries.



From Hinton to Holt - Gaunts Common

The current boundary runs along the road through the village splitting the community between the 2 parishes. The proposed realignment would bring all the residents into one parish. This proposal affects 26 properties (48 electors). The proposal does not impact on Dorset Council ward boundaries.

The impact of the proposals would change electorate numbers as set out below. Electoral equality is maintained:

Pamphill & Shapwick Parish Council	Number of Councillors (if applicable)	Electorate 2022	Projected Electorate 2027	Electors per Councillor 2027
Pamphill	7	378	315	45
Shapwick	3	149	151	51
Holt Parish Council	Number of Councillors (if applicable)	Electorate 2022	Projected Electorate 2027	Electors per Councillor 2027
Furzehill	2	204	214	107
Holt	9	1118	1167	130
Vale of Allen Parish Council	Number of Councillors (if applicable)	Electorate 2022	Projected Electorate 2027	Electors per Councillor 2027
Crichel	2	202	211	106
Gussage All Saints	2	177	200	100
Gussage St Michael	2	158	167	84
Hinton	4	351	327	82
Witchampton	4	320	363	91

Dorset Council would welcome views on the proposals sought by the Vale of Allen Parish Council before it makes draft recommendations for further consultation.

Vale of Allen Proposals Do you?

- Support recommendation
- Support with observations
- Oppose

Comments

Weymouth, Chickerell and Winterborne Farringdon

Parishes included in Winterborne Farringdon: Bincombe, Whitcombe, Winterborne Came, Winterborne Herringston, Winterborne Monkton.

Guidance on Community Governance Reviews and from the Local Government Boundary Commission for England is that in the interests of effective and convenient local government, principal councils should take into account the requirements imposed on the Commission when reviewing principal council boundaries ie that no unwarded parish should be divided by a district boundary, and that no parish ward should be split by such a boundary. Whilst the principal council is not subject to a strict requirement to achieve this, advice has been given that in the spirit of effective and convenient local government it might be advisable to do so.

Throughout the previous Community Governance Review, Dorset Council adopted a principle that it would not create a situation where parish boundaries were crossed by Dorset Council ward boundaries. Where changes were considered necessary for good community governance, a minor change to Dorset Council ward boundaries has been sought as few properties were affected and this would not impact on electoral equality of Dorset Council Wards (Chideock, 1 property, Netherbury 2 properties, Shipton George – 18 properties).

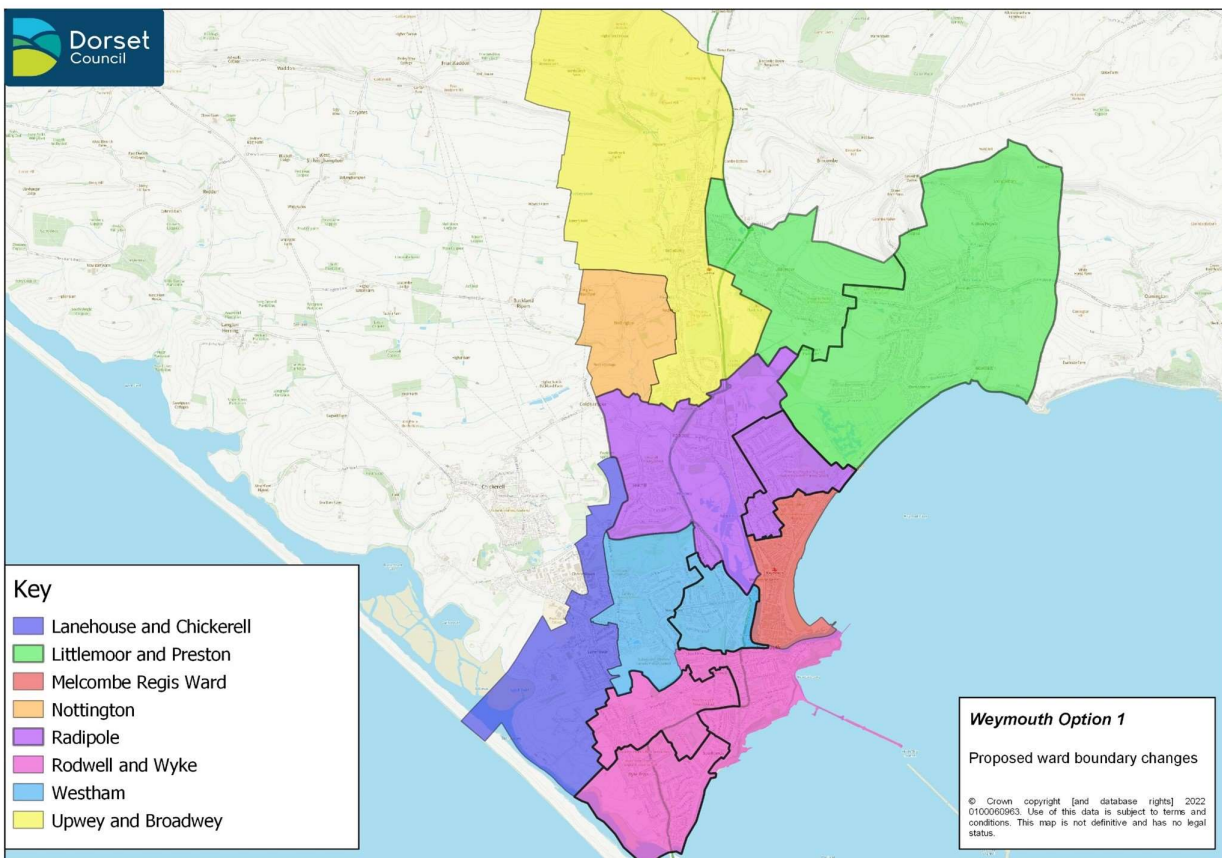
Bearing this principle in mind, Dorset Council **welcomes views on two options** for community governance for Weymouth that generally follow the principle of not crossing Dorset Council Ward boundaries, except where good governance could not be achieved without a small area of the proposed new parish boundary crossing the principal council ward boundary.

See detailed ward maps lower down this document.

Option 1

Proposal follows Dorset Council Ward boundaries creating 13 Town Wards with 24 Councillors. Option 1 **includes taking part of Chickerell into Weymouth and part of Bincombe into Weymouth** where a large development is proposed. Dorset Council also welcome views on the names of the proposed Wards.

Parish Ward	Number of councillors	Electorate 2021	Electorate 2026	Electors per councillor 2026
Lanehouse & Chickerell	1	2171	2199	2199
Littlemoor & Preston 1	2	3681	4089	1873
Littlemoor & Preston 2	2	4350	4350	2160
Melcombe Regis	2	3548	3970	1985
Nottingham	1	177	498	498
Radipole 1	2	3929	3870	1935
Radipole 2	2	3424	3406	1703
Rodwell & Wyke 1	2	3517	3730	1865
Rodwell & Wyke 2	2	3519	3732	1866
Rodwell & Wyke 3	2	3938	4153	2077
Upwey & Broadwey	2	3846	4246	2123
Westham 1	2	3670	3773	1887
Westham 2	2	3231	3797	1899



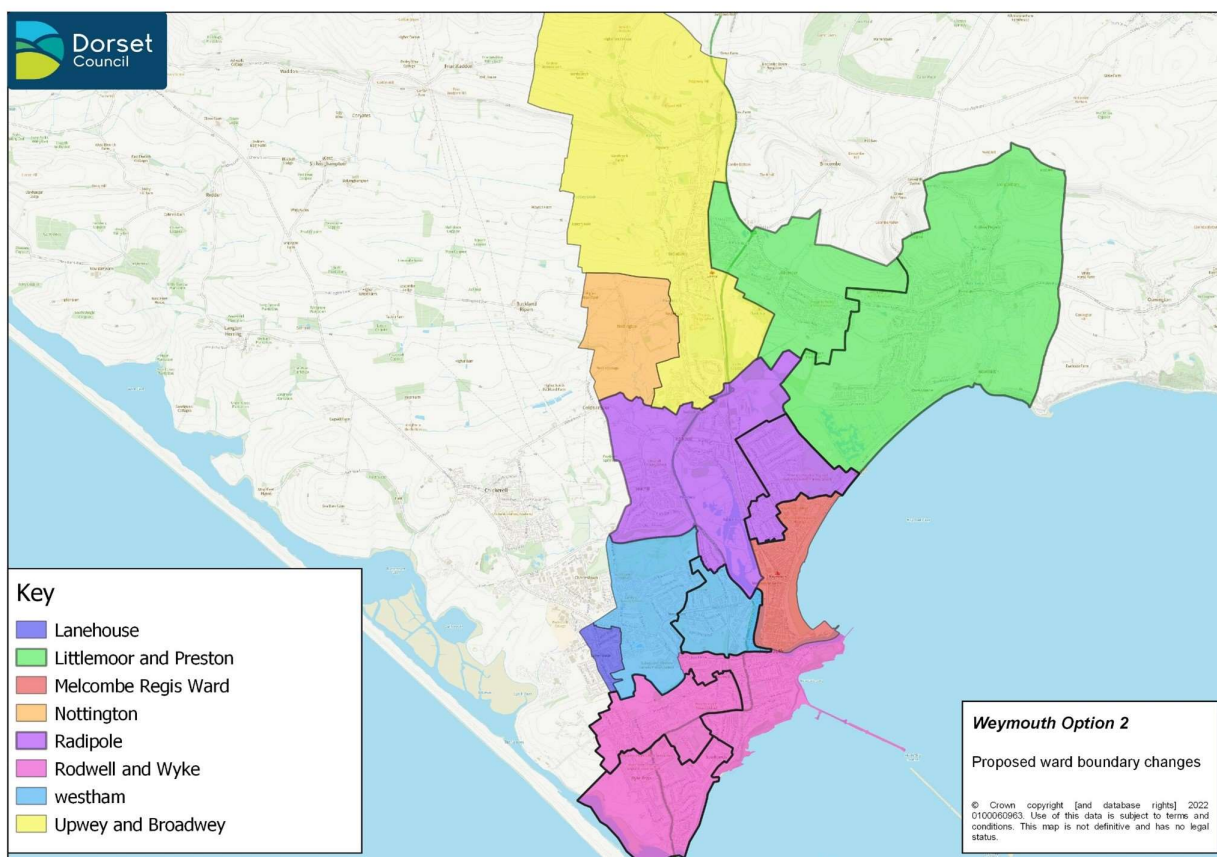
Weymouth, Chickerell and Winterborne Farringdon - Option 1. Do you?

- Support recommendation
- Support with observations
- Oppose

Option 2

Proposal following Dorset Council Ward boundaries creating 13 Town Wards with 24 Councillors. Option 2 **does not include taking part of Chickerell into Weymouth** but **does include taking in part of Bincombe into Weymouth** where a large development is proposed as this is largely supported by the Parish Council. Dorset Council also welcome views on the names of the proposed Wards.

Parish Ward	Number of councillors	Electorate 2021	Electorate 2026	Electors per councillor 2026
Lanehouse	1	1113	1113	1113
Littlemoor & Preston 1	2	3681	4089	1873
Littlemoor & Preston 2	2	4350	4350	2160
Melcombe Regis	2	3548	3970	1985
Nottingham	1	177	498	498
Radipole 1	2	3929	3870	1935
Radipole 2	2	3424	3406	1703
Rodwell & Wyke 1	2	3517	3730	1865
Rodwell & Wyke 2	2	3519	3732	1866
Rodwell & Wyke 3	2	3938	4153	2077
Upwey & Broadway	2	3846	4246	2123
Westham 1	2	3670	3773	1887
Westham 2	2	3231	3797	1899



Weymouth, Chickerell and Winterborne Farringdon - Option 2. Do you?

- Support recommendation
- Support with observations
- Oppose

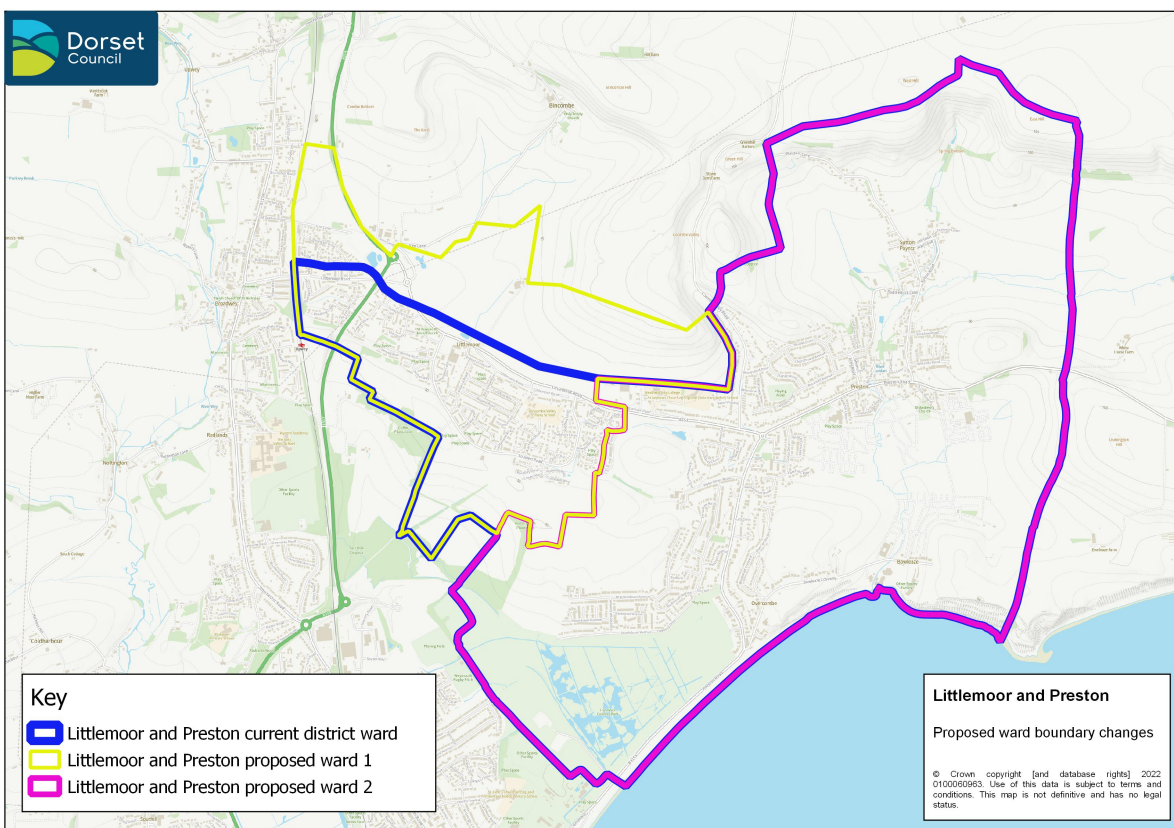
Comments on Weymouth, Chickerell and Winterborne Farringdon - Options 1 and 2

Do you have any suggestions for ward names under option 1?

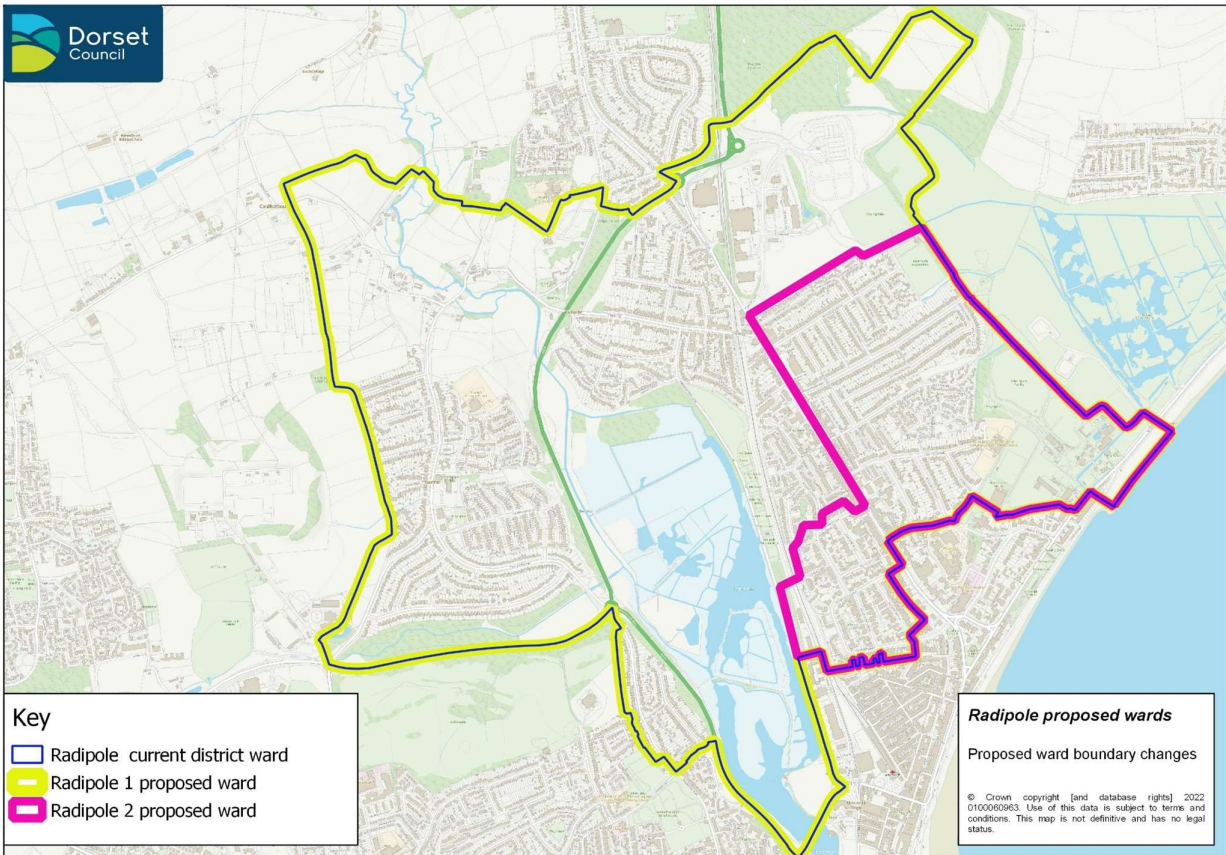
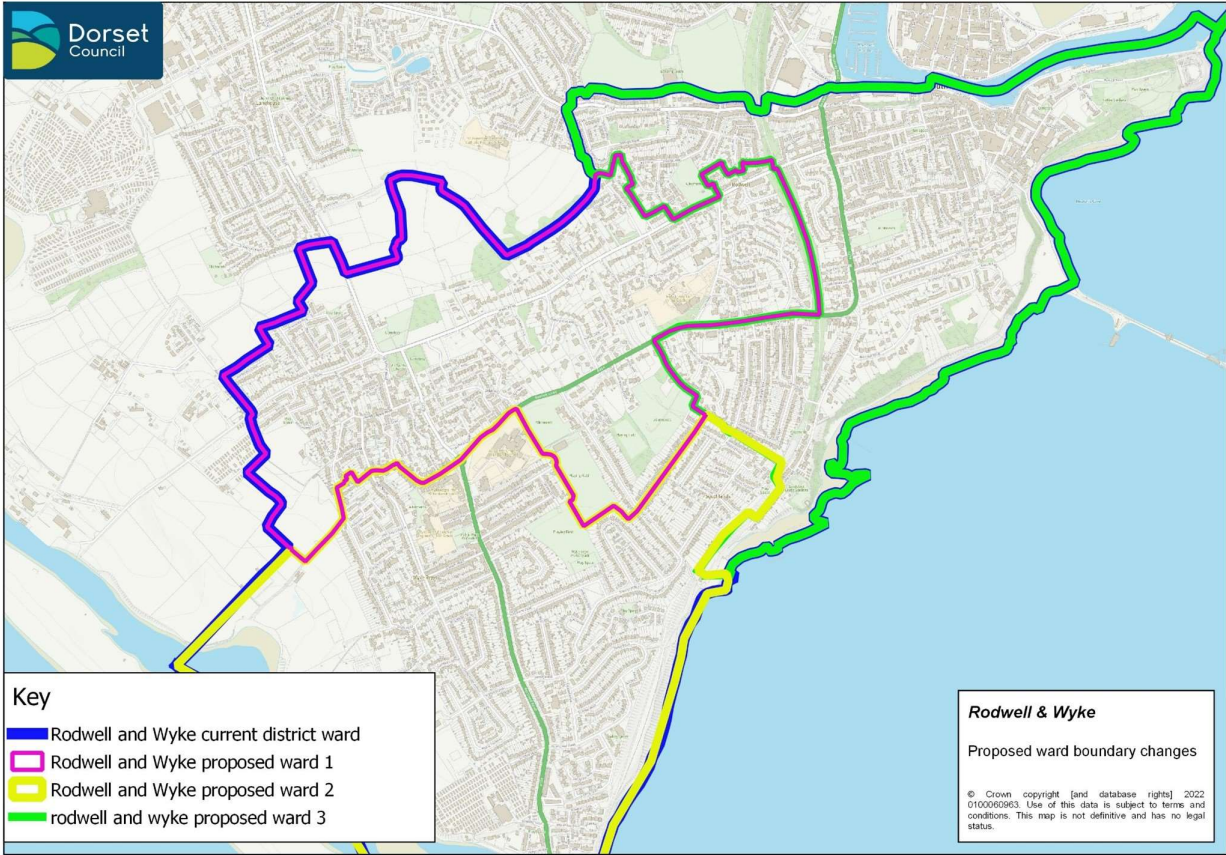
Do you have any suggestions for ward names under option 2?

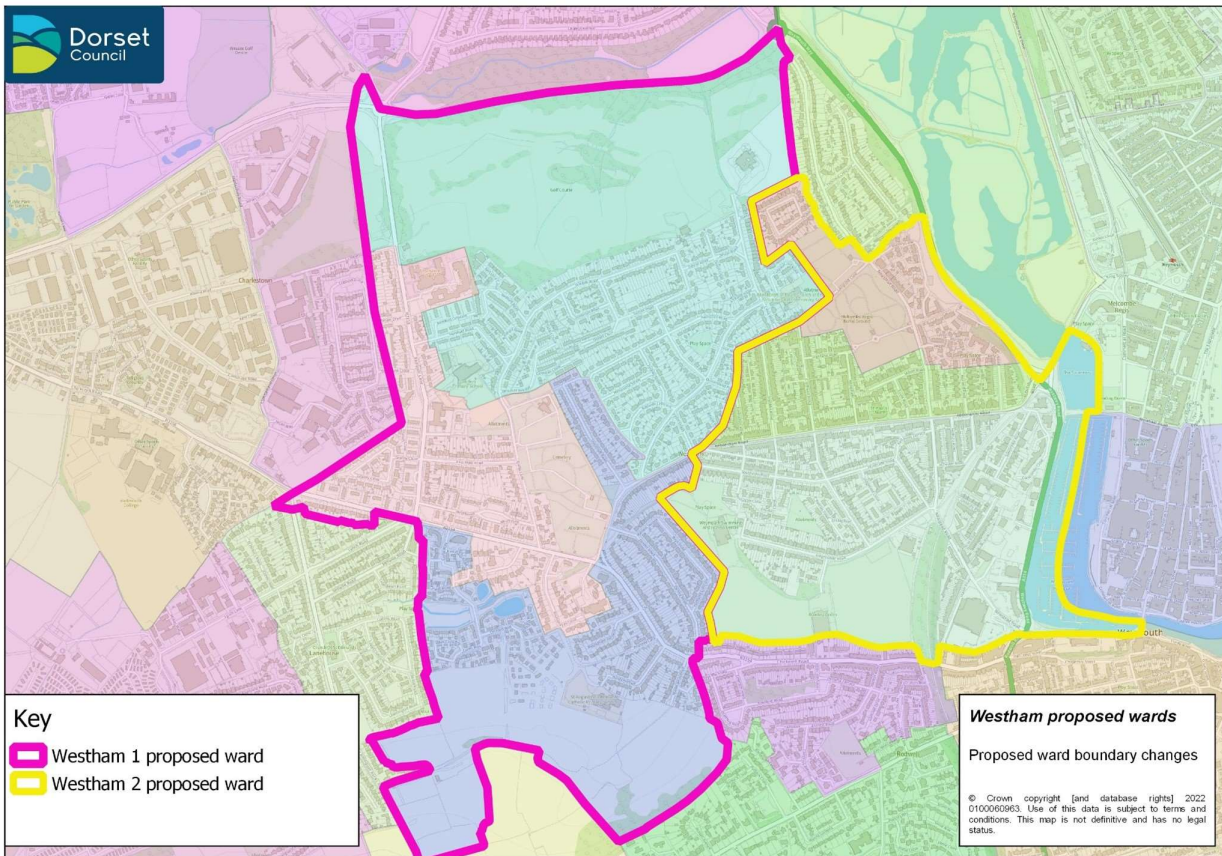


Ward Maps - applicable to both options above



Note: This map replaced an earlier incorrect ward map for Littlemoor and Preston Ward. This was substituted on 24/11/2022





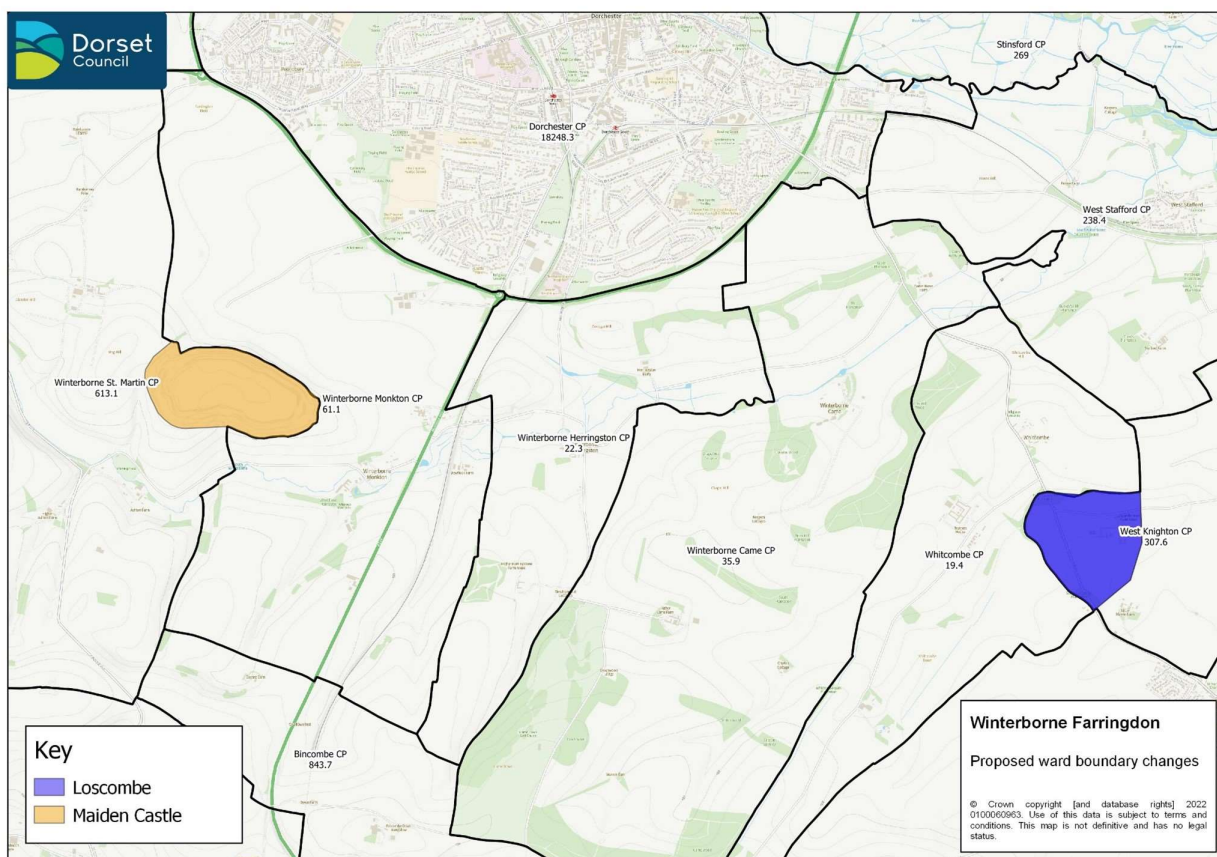
Note: If you wish to submit an alternative proposal you can do so at the end (including providing maps/documents).

Winterborne Farringdon

Maiden Castle - Currently, the entrance and approach to Maiden Castle lies within Winterborne Monkton parish. The Winterborne Farringdon Grouped Parish Council have proposed that the whole of the Maiden castle site is moved within the parish of Winterborne Monkton as currently 2/3rd of the site is already in this parish with only approximately a 1/3rd being within the Winterborne St Martin parish. It is suggested by the Winterborne Farringdon Grouped Parish Council that such a change would not impact on Winterborne St Martin parish as there would be no issues of representation and no burden or loss of income for the affected parishes. They believe that moving the boundary to unite the castle with its landscape would allow a more coherent case for the ongoing preservation and protection of its approaches in the future.

Loscombe – Winterborne Farringdon Grouped Parish Council’s view is that Loscombe protrudes discordantly into Whitcombe parish. They state that few properties are involved and whilst the Parish Council has no strong feelings, they suggest that a more coherent western boundary for Loscombe would be to follow the A352 rather than the line of the old road that was lost after the 1769 Turnpike Act diverted the road.

Dorset Council would welcome views on the proposals of Winterborne Farringdon Grouped Parish Council set out above.



Winterborne Farringdon - proposals for Maiden Castle and Loscombe. Do you?

- Support recommendation
- Support with observations
- Oppose

Comments

Alternative Proposal

If you wish to submit an alternative proposal to the recommendations, you can do that next. Please select the recommendation you wish provide an alternative for. Note: you can only respond on one recommendation here but can repeat the consultation if you would like to provide alternatives for more than one area.

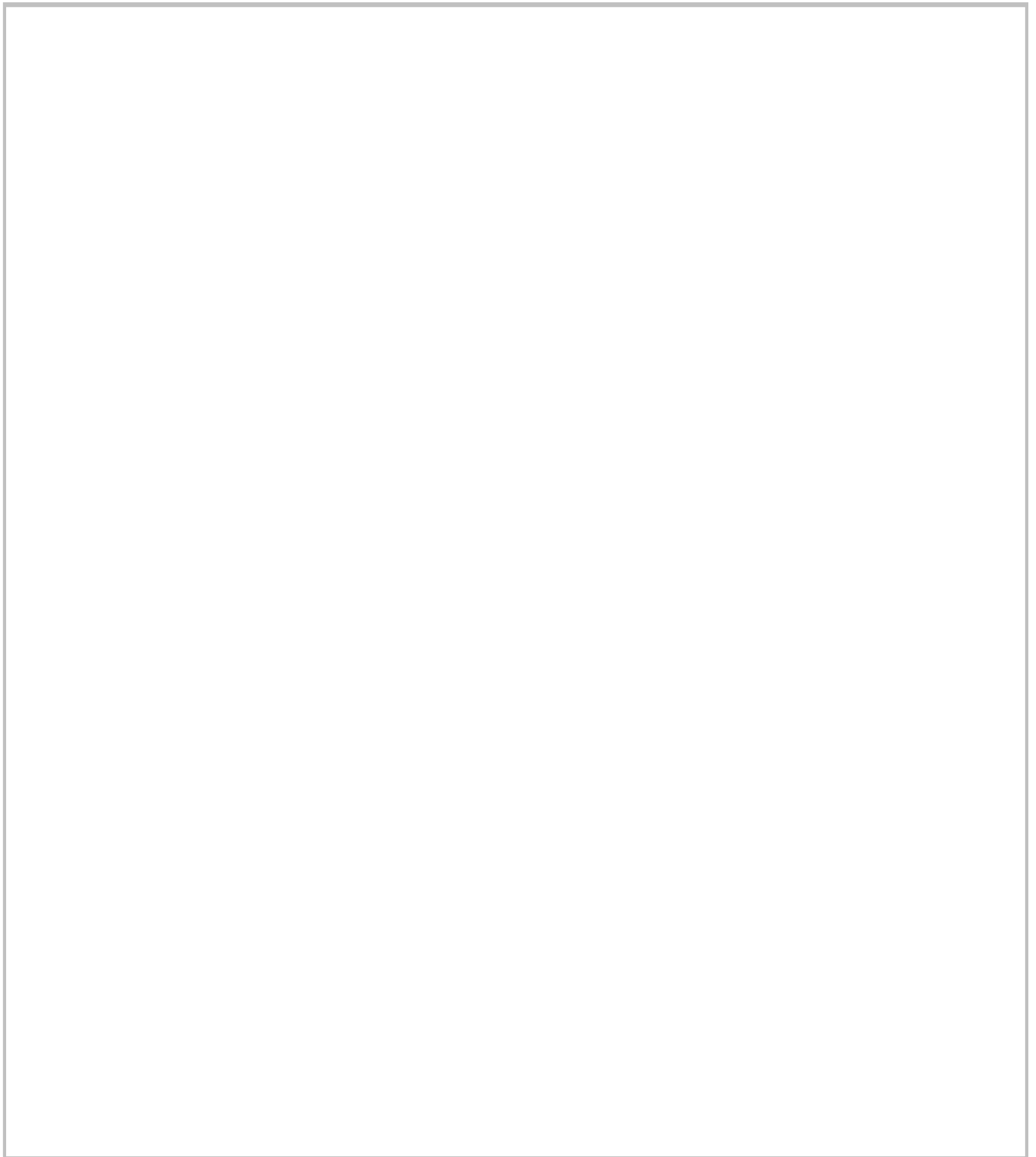
Do you wish to submit an alternative proposal

- Yes
- No

Which recommendation do you wish to provide an alternative for?

- Vale of Allen - Parishes included: Crichel, Gussage All Saints, Gussage St Michael, Hinton, Witchampton
- Weymouth - Options 1 or 2
- Winterborne Farringdon - Maiden Castle and Loscombe

Your alternative proposal



Documents

You can submit documents and maps by attaching them to this document

If you want to propose alternatives for completely different areas not already raised do this by emailing the team directly on **cgr@dorsetcouncil.gov.uk**

Any other comments

About you

We collect diversity information, not only to ensure any changes do not unfairly impact on specific sectors of the community, but also to try to make sure our consultation responses come from a representative sample of local residents. We would appreciate if you can complete the following details.

Which age group do you belong to?

- Under 18
- 18 - 24
- 25 - 34
- 35 - 44
- 45 - 54
- 55 - 64
- 65 or over
- Prefer not to say

What is your gender?

- Male
- Female
- Prefer to self describe
- Prefer not to say

The Equality Act 2010 describes a person as disabled if they have a longstanding physical or mental condition that has lasted, or is likely to last 12 months; and this condition has a substantial adverse effect on their ability to carry out normal day-to-day activities. People with some conditions (cancer, multiple sclerosis and HIV/AIDS for example) are considered to be disabled from the point that they are diagnosed.

Do you consider yourself to be disabled as set out in the Equality Act 2010?

- Yes
- No
- Prefer not to say

If yes, please tell us which type of impairment applies to you. You may have more than one type of impairment, so please select all the impairments that apply to you

- Physical disability
- Learning disability / difficulty
- Long-standing illness or health condition
- Mental health condition
- Sensory impairment (hearing, Sight or both)
- Prefer not to say
- Other (please specify)

What is your ethnic group?

- | | |
|---|---|
| <input type="radio"/> White British | <input type="radio"/> Black/Black British - Caribbean |
| <input type="radio"/> White Irish | <input type="radio"/> Any other Black background |
| <input type="radio"/> Gypsy/Irish traveller | <input type="radio"/> Mixed ethnic background - White and Asian |
| <input type="radio"/> Any other White background | <input type="radio"/> Mixed ethnic background - White and Black African |
| <input type="radio"/> Asian/Asian British - Bangladeshi | <input type="radio"/> Mixed ethnic background - White and Black Caribbean |
| <input type="radio"/> Asian/Asian British - Chinese | <input type="radio"/> Any other mixed background |
| <input type="radio"/> Asian/Asian British - Indian | <input type="radio"/> Prefer not to say |
| <input type="radio"/> Asian/Asian British - Pakistani | <input type="radio"/> Any other ethnic group (please specify) |
| <input type="radio"/> Any other Asian background | <input type="text"/> |
| <input type="radio"/> Black/Black British - African | |