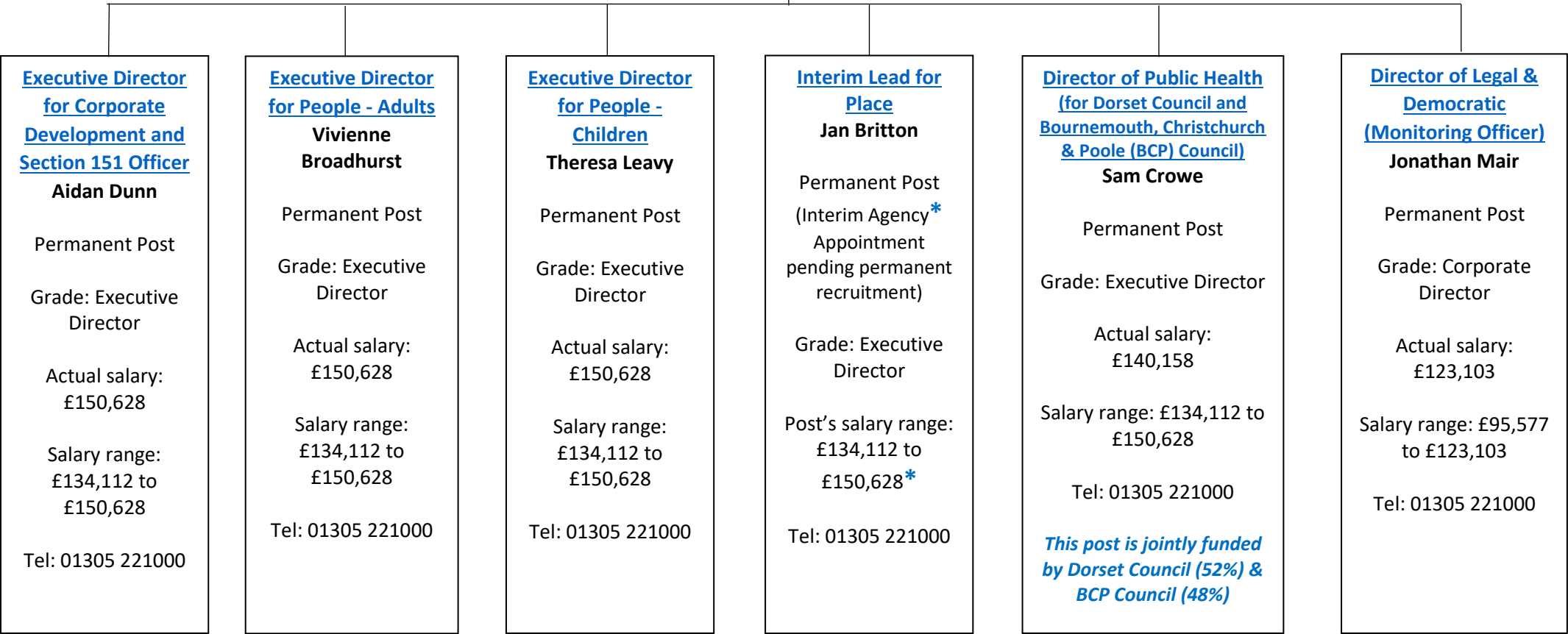


Chief Executive
Matt Prosser
Permanent Post
Grade: Chief Executive
Salary range: £180,565
Email: Chief.executive@dorsetcouncil.gov.uk
Tel: 01305 221000



* Total remuneration paid will not exceed that budgeted for a permanent post holder

**Executive Director for Corporate
Development and Section 151 Officer**

**Corporate Director
for Finance &
Commercial**

Permanent Post

Grade: Corporate
Director

Salary range:
£95,577 to
£123,103

Tel: 01305 221000

**Corporate Director
for Transform,
Innovate, Digital &
Climate**

Permanent Post

Grade: Corporate
Director

Salary range:
£95,577 to
£123,103

Tel: 01305 221000

**Corporate Director
for Customer &
Cultural**

Permanent Post

Grade: Corporate
Director

Salary range:
£95,577 to
£123,103

Tel: 01305 221000

Executive Director for Place

**Corporate Director
for Place
Services**

Permanent Post

Grade: Corporate
Director

Salary range:
£95,577 to
£123,103

Tel: 01305 221000

**Corporate Director
for Economic
Growth &
Infrastructure**

Permanent Post

Grade: Corporate
Director

Salary range:
£95,577 to
£123,103

Tel: 01305 221000

Executive Director for People – Adults

Executive Director for People – Children

**Corporate Director
for Housing**

Permanent Post
Grade: Corporate
Director

Salary range:
£95,577 to
£123,103

Tel: 01305 221000

**Corporate
Director for
Commissioning**

Permanent Post
(Interim Agency*
Appointment
pending permanent
recruitment)

Grade: Corporate
Director

Post's salary
range: £95,577 to
£123,103*

Tel: 01305 221000

**Corporate Director
for Adult Social
Care**

Permanent Post
Grade: Corporate
Director

Salary range:
£95,577 to
£123,103

Tel: 01305 221000

**Corporate Director
for Quality
Assurance &
Safeguarding
Families**

Permanent Post
(Interim Agency*
Appointment pending
permanent
recruitment)

Grade: Corporate
Director

Post's salary range:
£95,577 to
£123,103*

Tel: 01305 221000

**Corporate Director
for Commissioning
& Partnerships**

Permanent Post
(Interim Agency*
Appointment
pending permanent
recruitment)

Grade: Corporate
Director

Post's salary range:
£95,577 to
£123,103*

Tel: 01305 221000

**Corporate Director
for Education &
Learning**

Permanent Post
Grade: Corporate
Director

Salary range:
£95,577 to
£123,103

Tel: 01305 221000

**Corporate
Director for Care
& Protection**

Permanent Post
Grade: Corporate
Director

Salary range:
£95,577 to
£123,103

Tel: 01305 221000

** Total remuneration paid will not exceed that budgeted for a permanent post holder*

Director of Public Health
(for Dorset Council and Bournemouth,
Christchurch & Poole Council)

*The Public Health posts listed
on this page are jointly funded
by Dorset Council (52%) and
BCP Council (48%)*

**Consultant in
Public Health**

Permanent Post
Grade: Corporate
Director
Salary range:
£95,577 to
£123,103
Tel: 01305 221000

*This post is jointly
funded by Dorset
Council (52%) & BCP
Council (48%)*

**Consultant in
Public Health**

Permanent Post
Grade: Corporate
Director
FTE: 0.81
Salary range:
£95,577 to
£123,103
Tel: 01305 221000

*This post is jointly
funded by Dorset
Council (52%) & BCP
Council (48%)*

**Deputy Director of
Public Health**

Permanent Post
Grade: Corporate
Director
Salary range:
£95,577 to
£123,103
Tel: 01305 221000

*This post is jointly
funded by Dorset
Council (52%) & BCP
Council (48%)*

**Consultant in
Public Health**

Permanent Post
Grade: Corporate
Director
FTE: 0.6
Salary range:
£95,577 to
£123,103
Tel: 01305 221000

*This post is jointly
funded by Dorset
Council (52%) & BCP
Council (48%)*

**Consultant in
Public Health**

Permanent Post
Grade: Corporate
Director
Salary range:
£95,577 to
£123,103
Tel: 01305 221000

*This post is jointly
funded by Dorset
Council (52%) & BCP
Council (48%)*

**Consultant in
Public Health**

Permanent Post
Grade: Corporate
Director
Salary range:
£95,577 to
£123,103
Tel: 01305 221000

*This post is jointly
funded by Dorset
Council (52%) & BCP
Council (48%)*