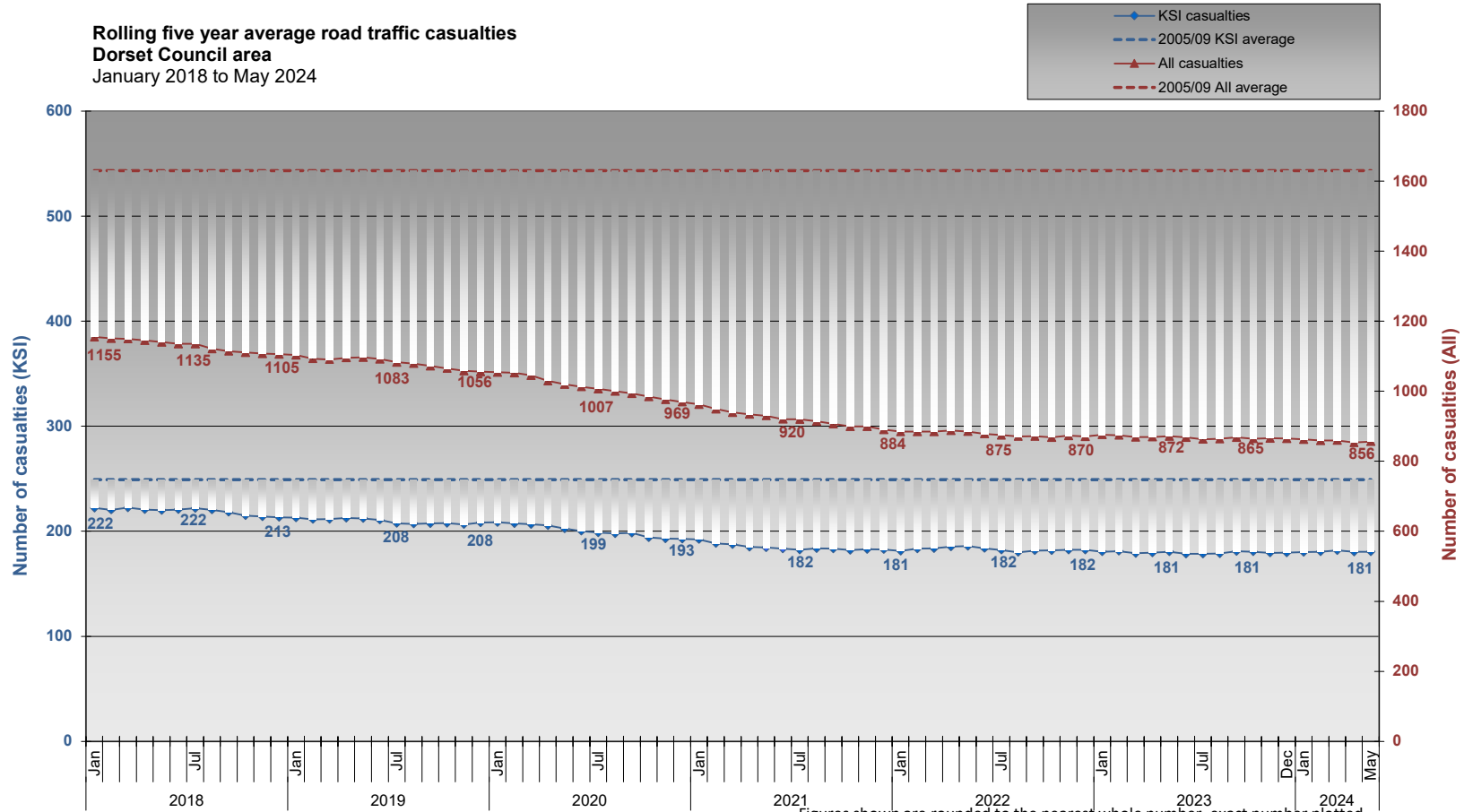


**Rolling Five Year Average
Road Traffic Casualties
January 2018 to May 2024**

KSI = Killed or Seriously Injured

Rolling five year average road traffic casualties
Dorset Council area
 January 2018 to May 2024

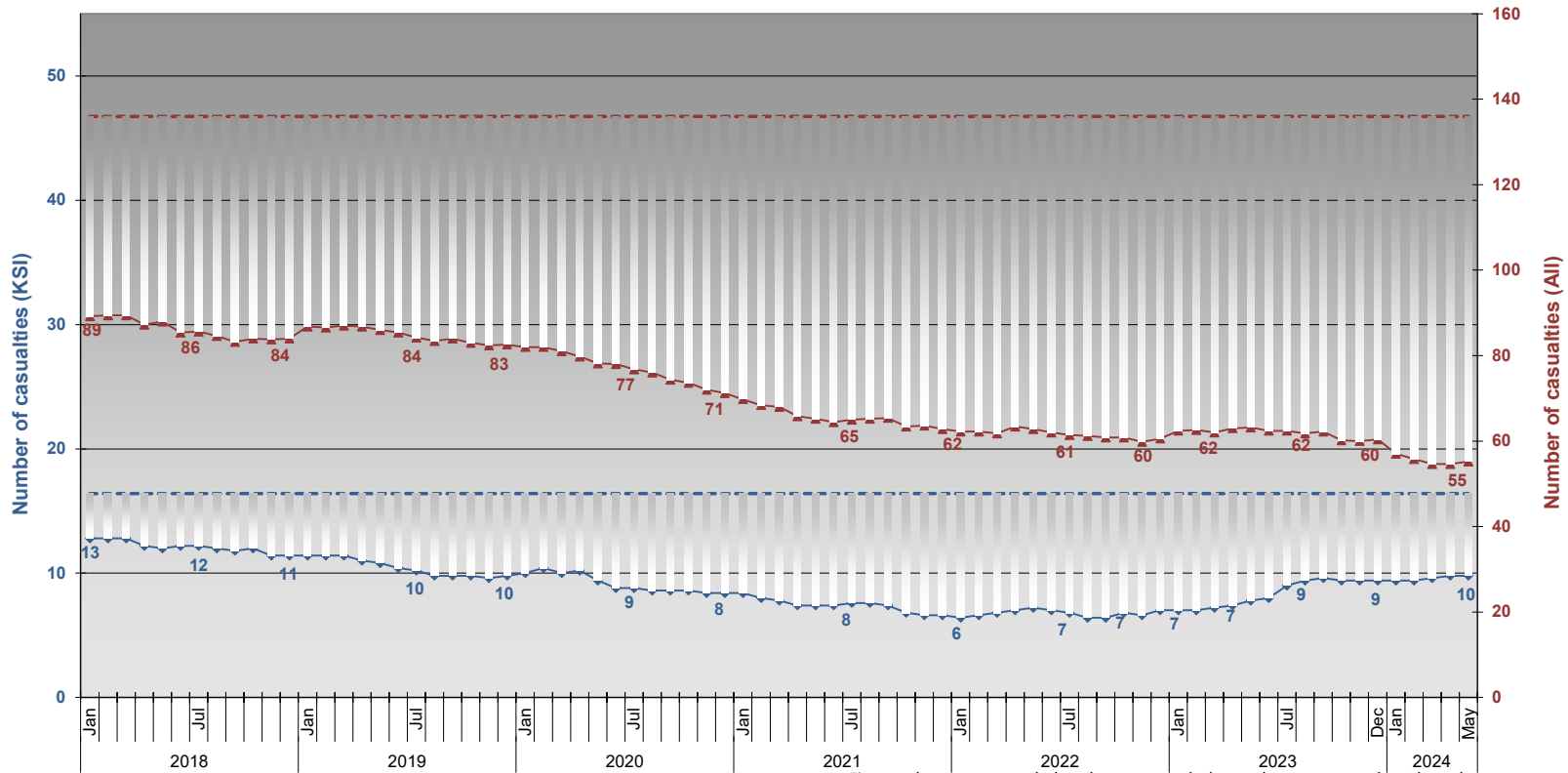
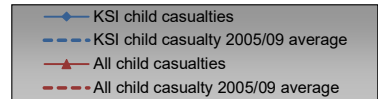


Figures shown are rounded to the nearest whole number, exact number plotted.

Figures included in the above chart are for the Dorset Council area only

Figures for 2022 are subject to change until signed off with the DfT early in 2024

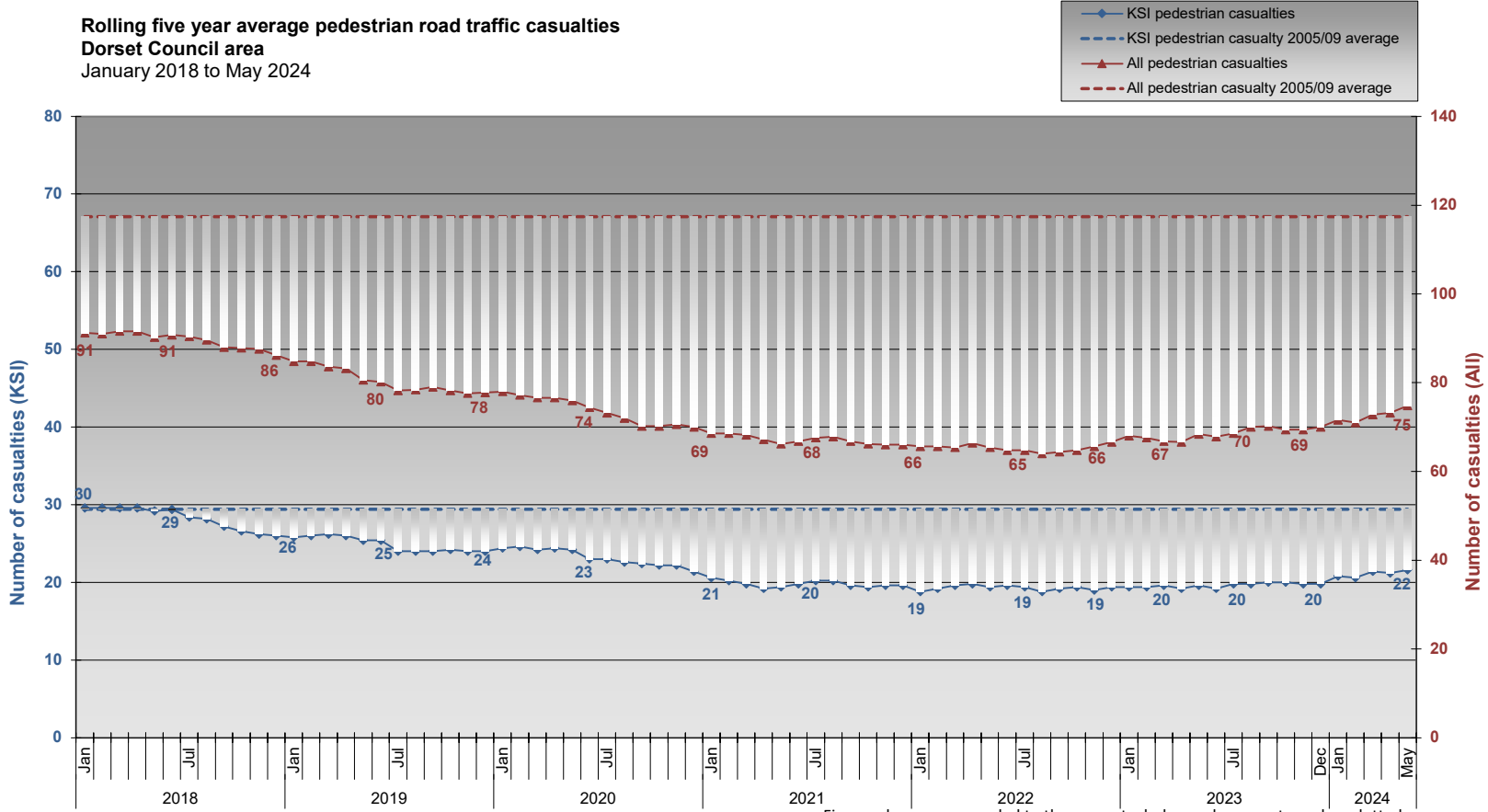
**Rolling five year average child (0 - 15 years) road traffic casualties
Dorset Council area
January 2018 to May 2024**



Figures shown are rounded to the nearest whole number, exact number plotted.
 Figures included in the above chart are for the Dorset Council area only
 Figures for 2022 are subject to change until signed off with the DfT early in 2024

The majority of child casualties are car passengers and only a small proportion of child casualties both all and KSI occur when travelling to or from school.

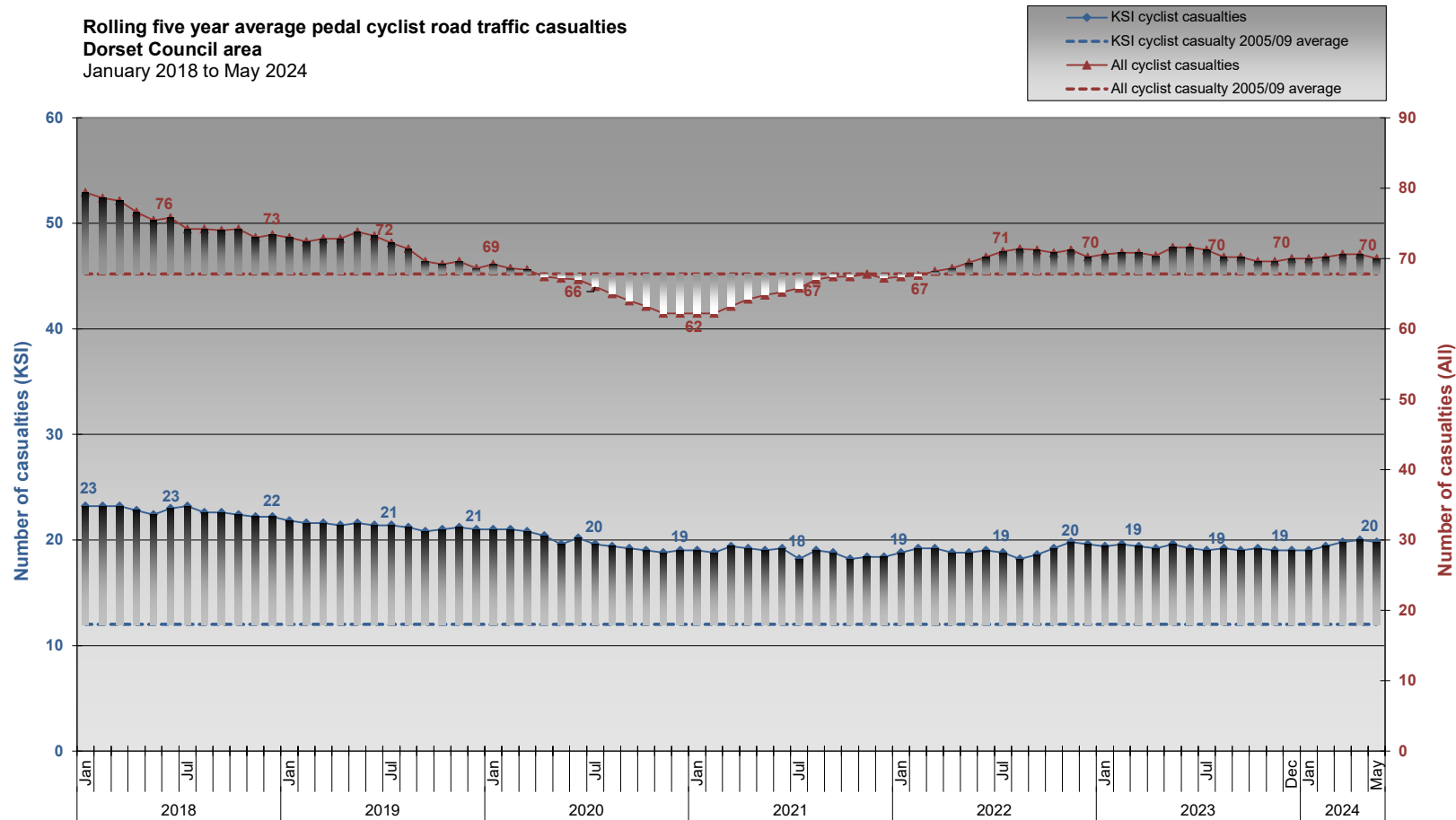
Rolling five year average pedestrian road traffic casualties
Dorset Council area
 January 2018 to May 2024



Figures shown are rounded to the nearest whole number, exact number plotted.
 Figures included in the above chart are for the Dorset Council area only
 Figures for 2022 are subject to change until signed off with the DfT early in 2024

The majority of pedestrian casualties are adults.

Rolling five year average pedal cyclist road traffic casualties
Dorset Council area
 January 2018 to May 2024

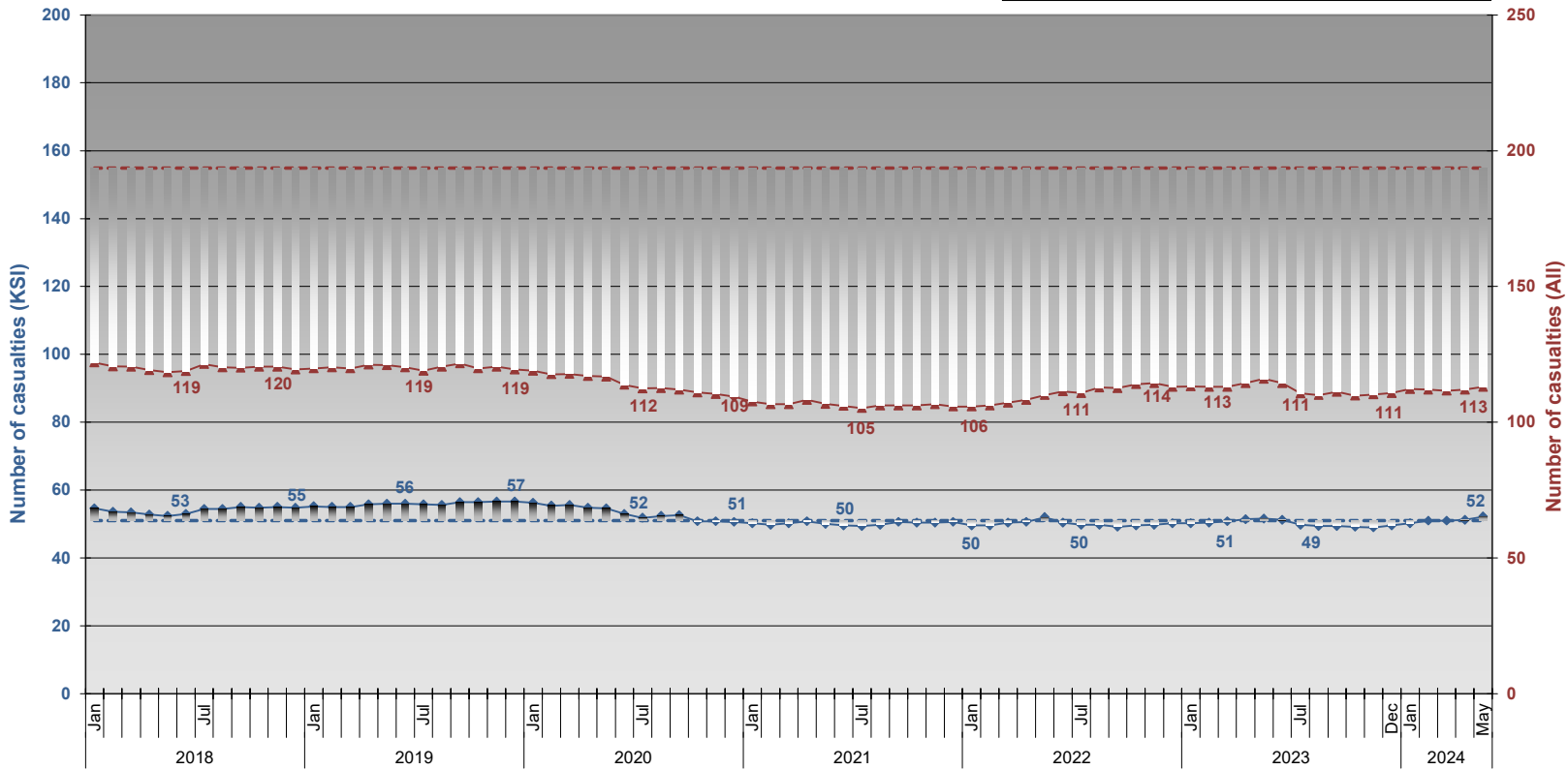
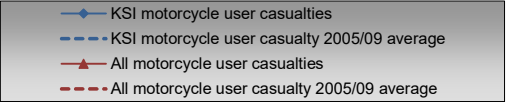


Figures shown are rounded to the nearest whole number, exact number plotted.
 Figures included in the above chart are for the Dorset Council area only
 Figures for 2022 are subject to change until signed off with the DfT early in 2024

Cyclist casualties are the only road user group to have consistently risen above the 2005/9 average for both all and KSI casualties; this is also the case regionally and nationally. An increase in the number of cycle journeys is cited as one of the possible reasons for this increase.

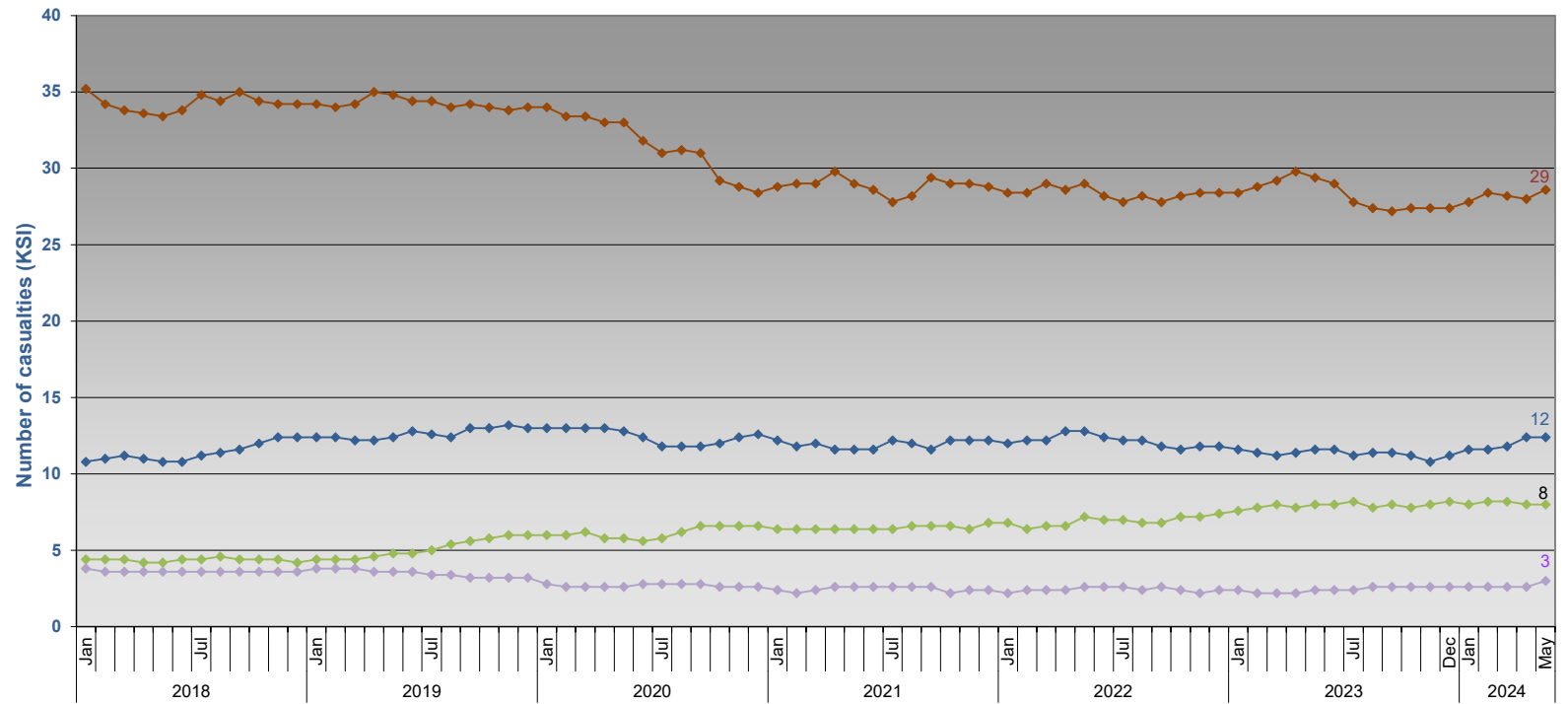
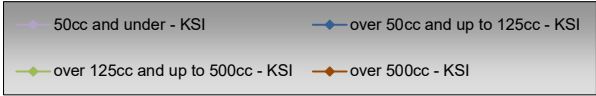
The majority of cyclist casualties are adults.

Rolling five year average motorcycle user road traffic casualties
Dorset Council area
 January 2018 to May 2024



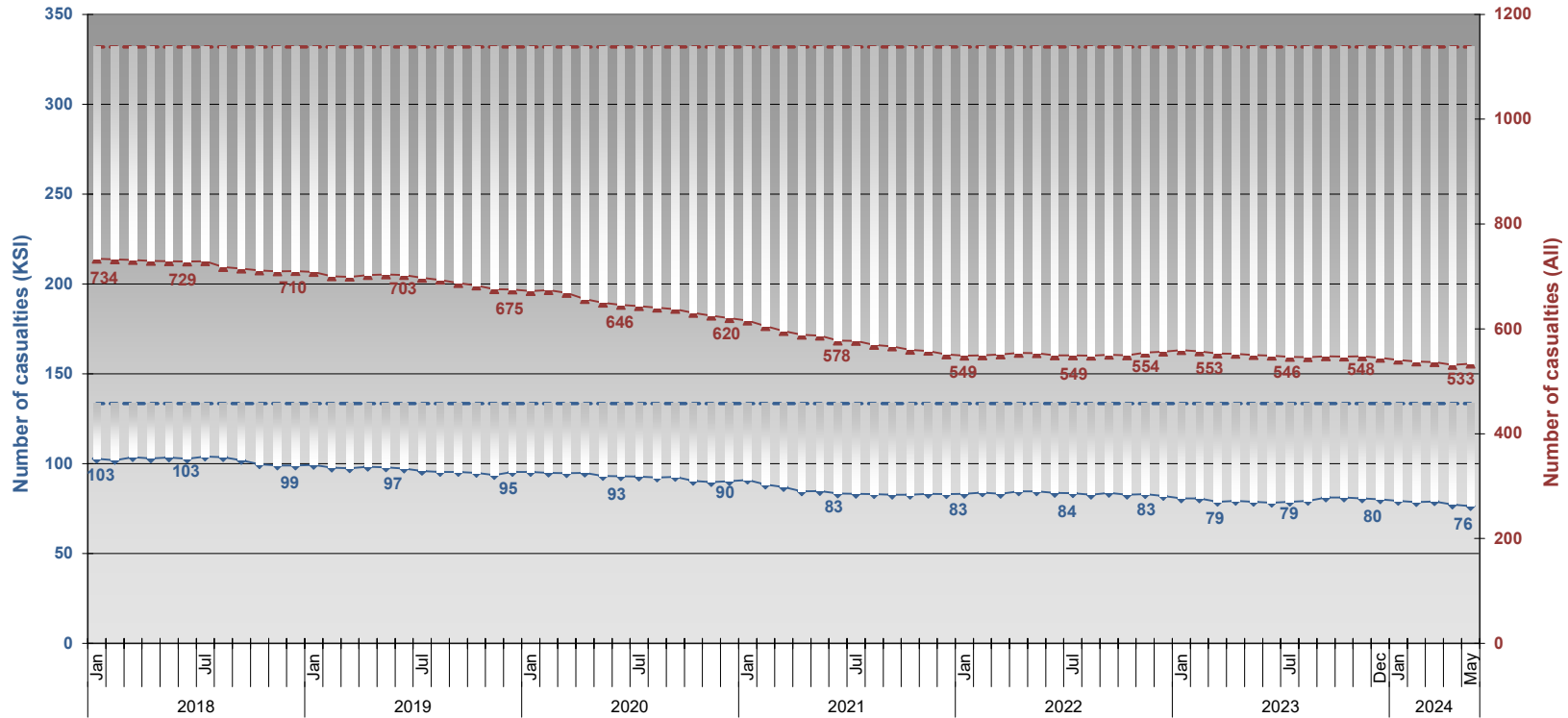
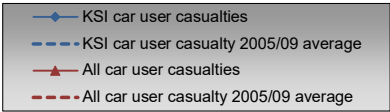
Figures shown are rounded to the nearest whole number, exact number plotted.
 Figures included in the above chart are for the Dorset Council area only
 Figures for 2022 are subject to change until signed off with the DfT early in 2024

Rolling five year average motorcycle user KSI road traffic casualties
Dorset Council area
 January 2018 to May 2024



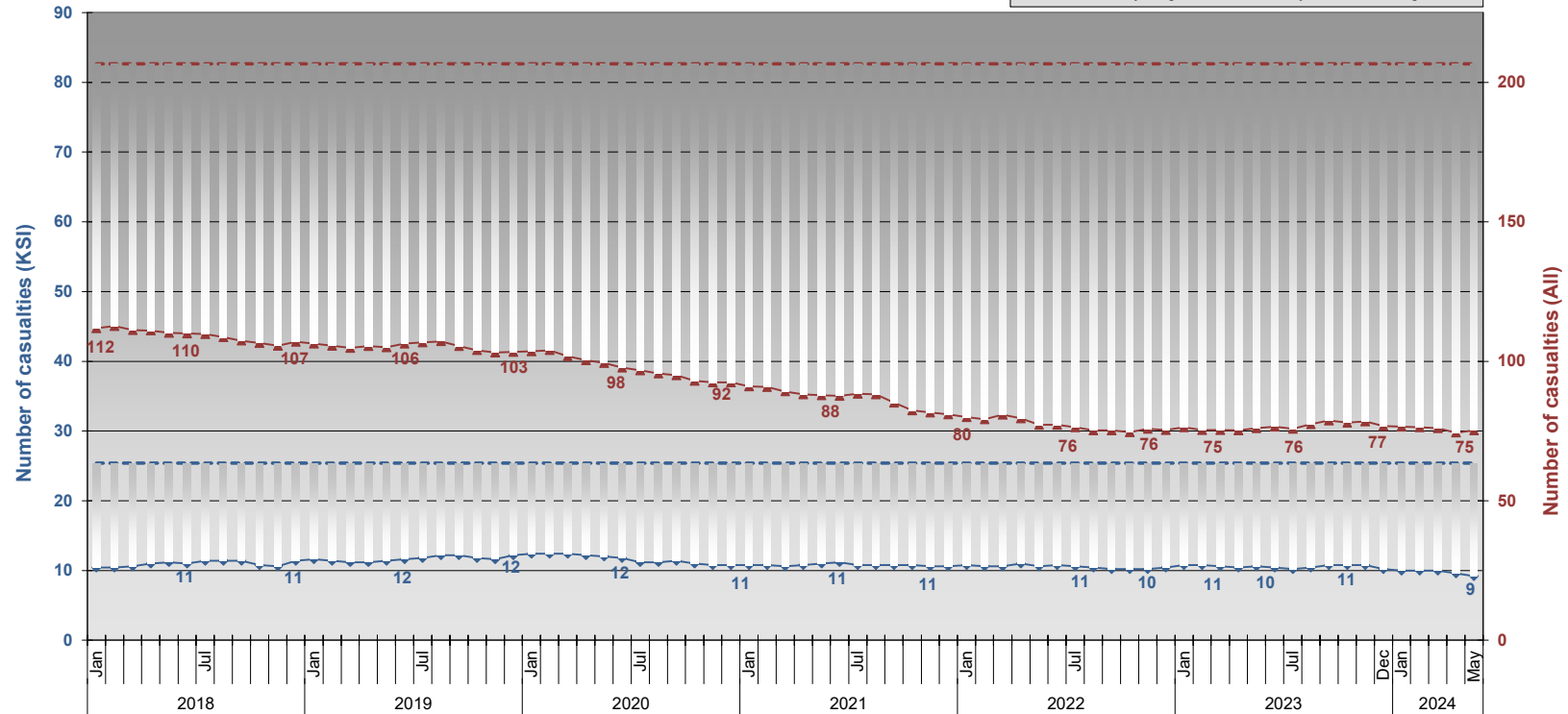
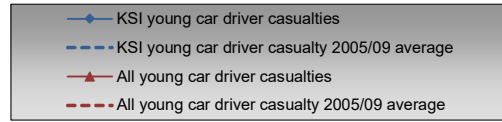
Figures shown are rounded to the nearest whole number, exact number plotted.
 Figures included in the above chart are for the Dorset Council area only
 Figures for 2022 are subject to change until signed off with the DfT early in 2024

Rolling five year average car user road traffic casualties
Dorset Council
 January 2018 to May 2024



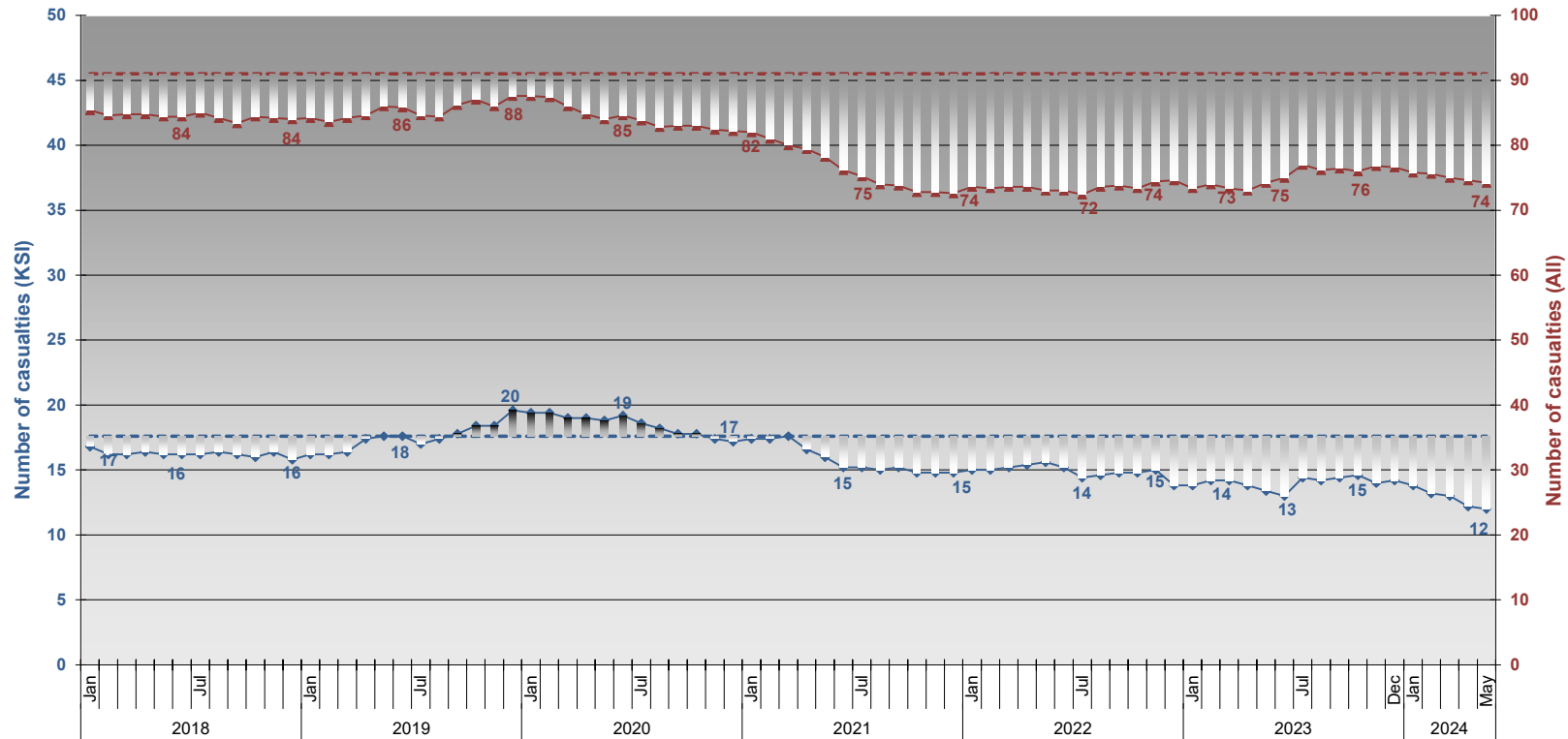
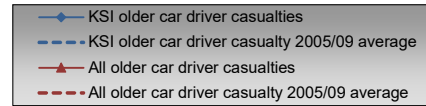
Figures shown are rounded to the nearest whole number, exact number plotted.
 Figures included in the above chart are for the Dorset Council area only
 Figures for 2022 are subject to change until signed off with the DfT early in 2024

Rolling five year average young car driver (17 - 24 years) road traffic casualties
Dorset Council area
 January 2018 to May 2024



Figures shown are rounded to the nearest whole number, exact number plotted.
 Figures included in the above chart are for the Dorset Council area only
 Figures for 2022 are subject to change until signed off with the DfT early in 2024

Rolling five year average older car driver (65+ years) road traffic casualties
Dorset Council
 January 2018 to May 2024



Figures shown are rounded to the nearest whole number, exact number plotted.
 Figures included in the above chart are for the Dorset Council area only
 Figures for 2022 are subject to change until signed off with the DfT early in 2024