

Tranquil Areas Mapping

In 1995 the CPRE and Countryside Commission published their Tranquil Areas Maps for the regions of England. These compared the extent of the countryside affected by urban or large scale development between the 1960s and 1990s. The maps were drawn at a regional level to provide a broad brush picture of the countryside free from urban intrusion. The approach developed for the 1995 maps has been adapted to provide a similar map for Christchurch Borough. The level of disturbance for this map is based on the distance from the main urban elements within the Borough. Where these overlap it is suggested these are the least tranquil parts of the Borough.

The most tranquil areas lie:

- 1km from the major trunk road and rail route
- 0.5km from the other strategic main roads
- 0.5km from the built up areas
- 0.5 km from power transmission lines
- Outside of the mapped noise contours for Bournemouth International Airport.

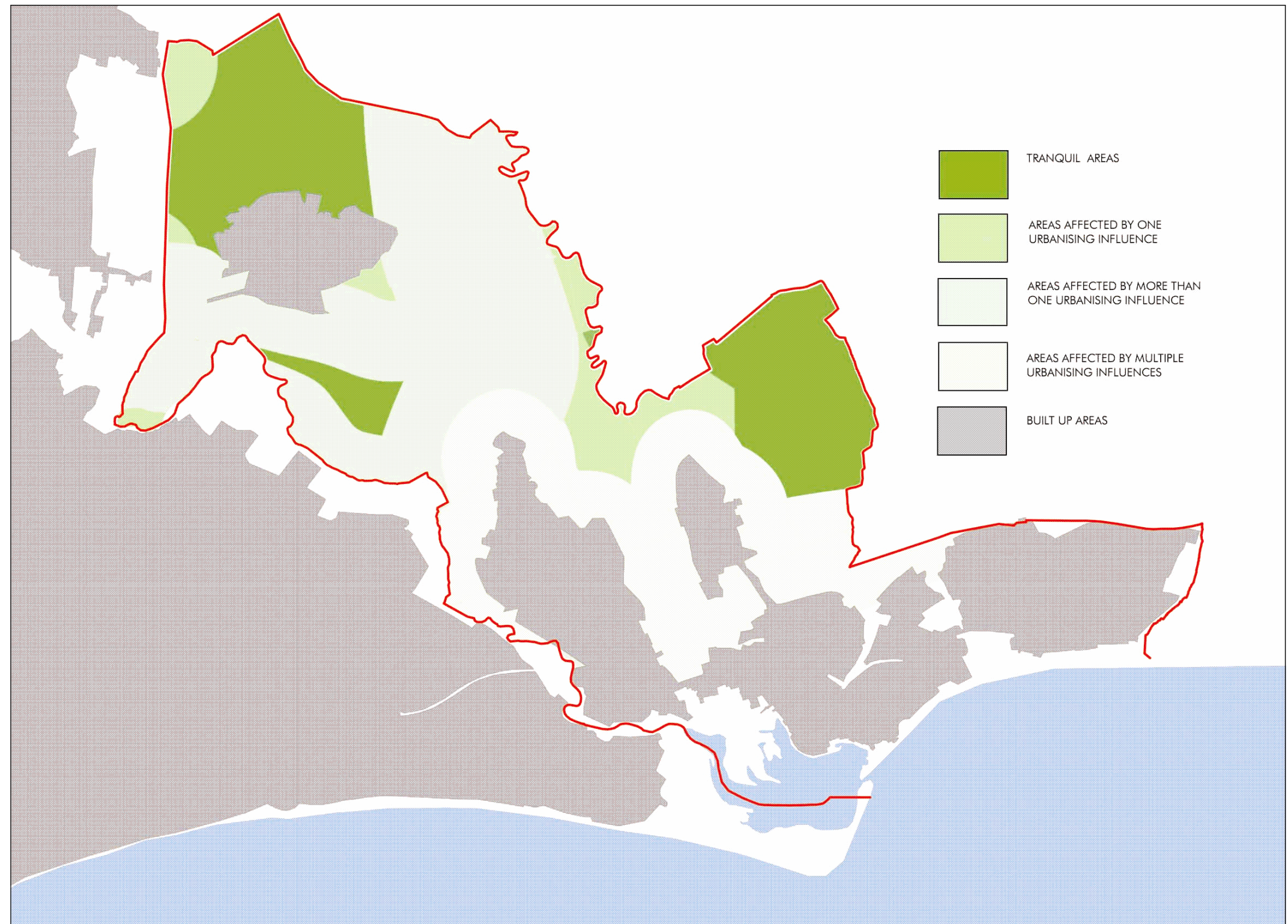


Figure 3.9 - Tranquil Areas Assessment

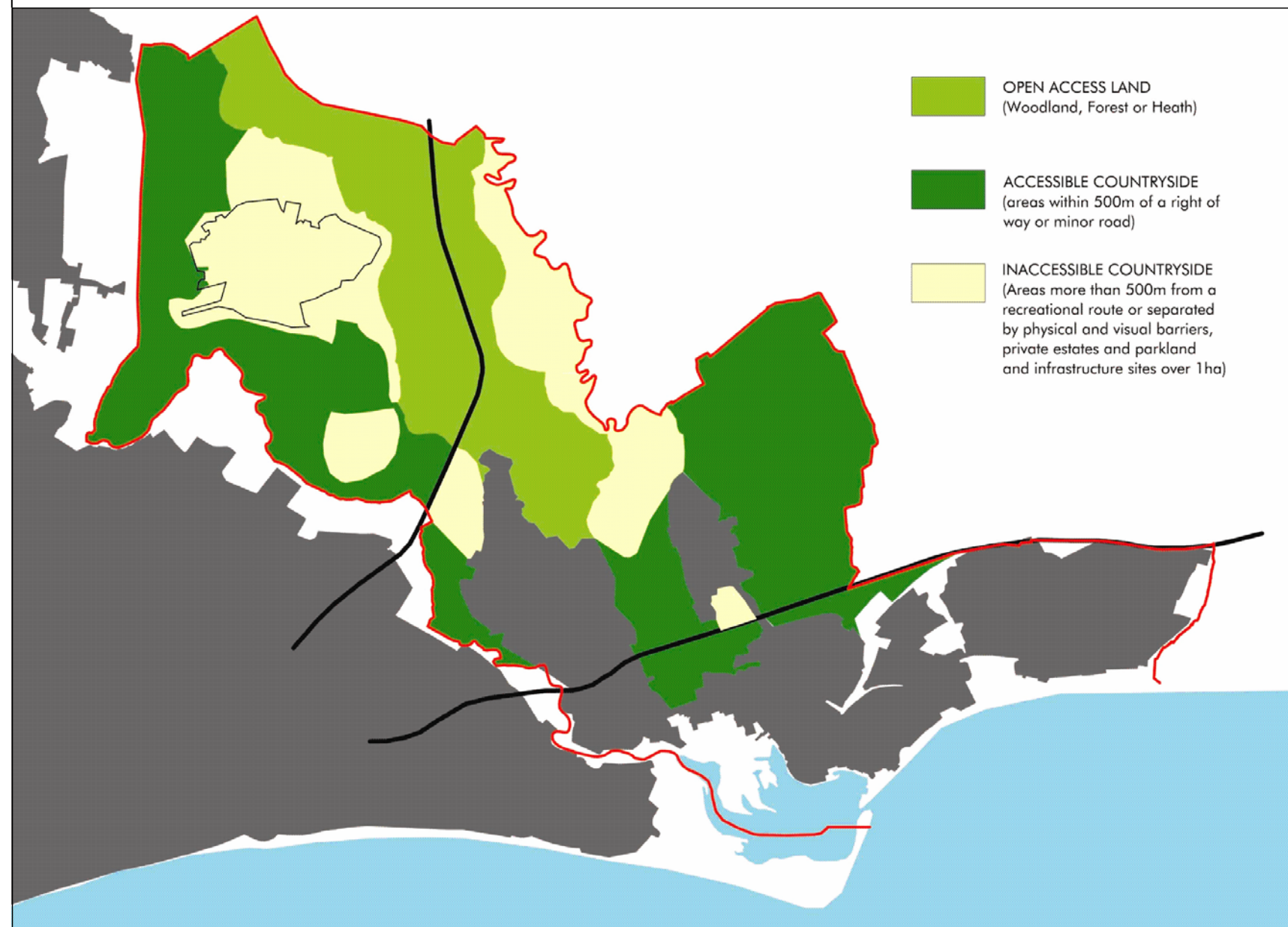


Figure 3.10 - Recreational Access Assessment

Recreational Access

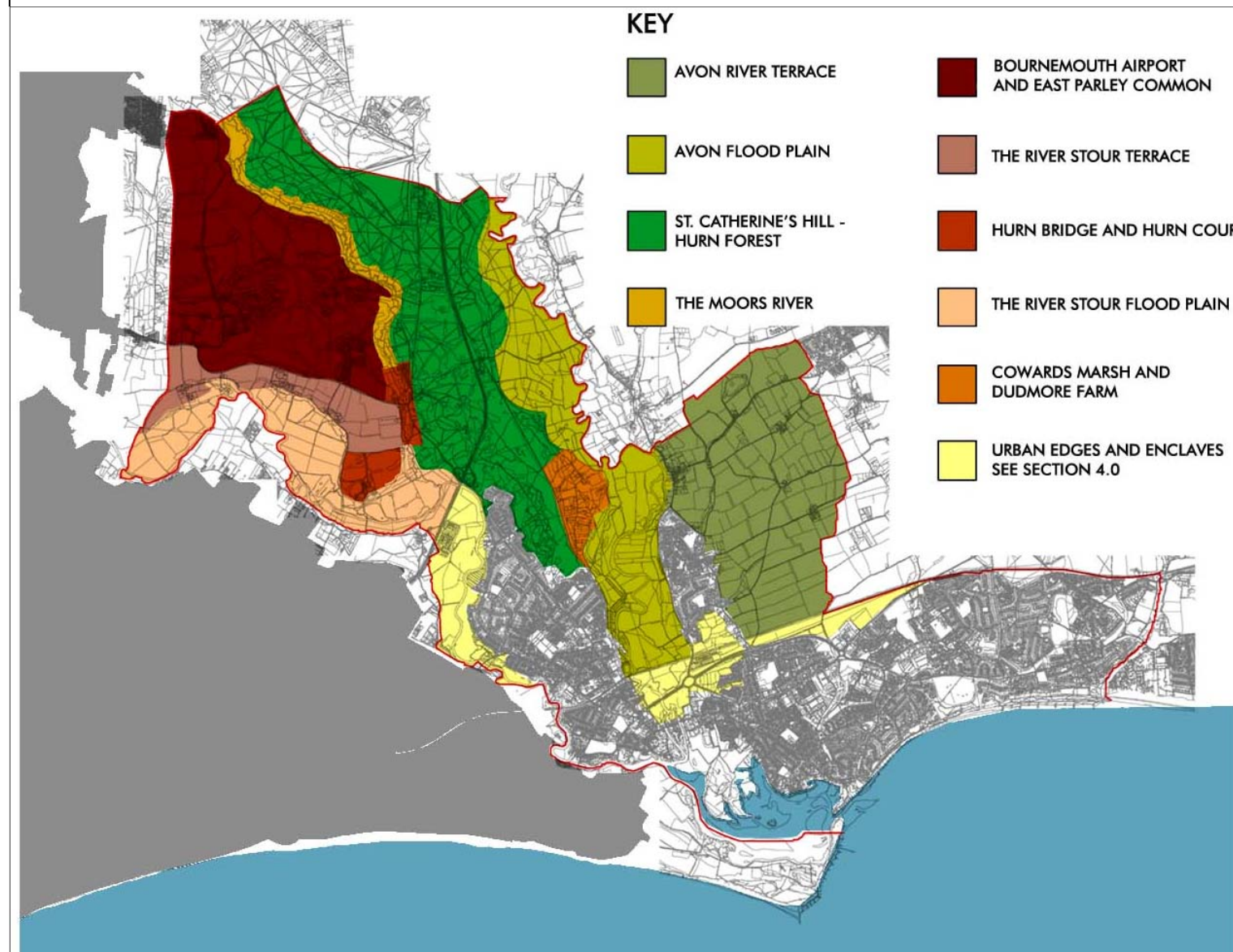
3.3.24 An assessment of the potential for recreational access of the rural landscape is illustrated in **Figure 3.10**. This demonstrates some variation between different parts of the rural landscape in terms of access to footpaths and to open land across the borough. Areas within 500m of a path or minor road and open access land are identified as either physically or visually accessible countryside. Areas bounded by major roads, or other physical boundaries, private estates or major infrastructure sites are identified as inaccessible.

3.3.25 On the Avon Terrace the local network of minor lanes and footpaths provides good access to the farmland between Burton and the Borough Boundary. A number of footpath routes in this area provide links to the more visually interesting landscape outside of the Borough to the east.

3.3.26 By contrast the Avon Valley Flood Plain is an inaccessible landscape. A single footbridge and the busy Avon Causeway provide the only potential crossings of the 9-10km of the river within or bordering the Borough.

3.3.27 The areas of heath and conifer forest along the St Catherine's Ridge and Hurn Forest provide extensive areas of open access land, although sections of this are interrupted by the A338 trunk road.

3.3.28 On the western side of the Borough the Airport excludes access from a substantial area. To the south of this the River Stour corridor provides a selection of footpath and minor lane routes on either side of the river. Occasional crossings allow for circular walks around at least part of the valley. Hurn Court is one of the very few parkland estate areas within the rural part of the Borough. This area is noted as a minor area of inaccessible countryside.



Landscape Character Areas

3.3.29 With the variations in the physical structure of the landscape across the Borough, there are a range of distinct landscape character areas. These are defined on the basis of broadly similar character and defined geographical areas. Most areas relate to the four broad landscape types found within the Borough. Some extend into neighbouring administration areas. Each area is described in general terms along with a summary of the main characteristics. The key issues in respect of future landscape management or potential sensitivity to development or change are identified within each section.

Character Areas

1. Avon River Terrace
2. Avon Flood Plain
3. Cowards Marsh - Dudmoor Farm
4. St. Catherine's Hill - Hurn Forest
5. The Moors River
6. Hurn Bridge and Hurn Court
7. The River Stour Terrace
8. River Stour Flood Plain
9. Bournemouth Airport and East Parley Common

Figure 3.11 - Rural Character Areas Map

