

RDF incinerators we know cause carbon dioxide emissions no matter where they are built. We have all heard how we must reduce this in order to leave the world a better place for our children. Excessive carbon production in the generation of power is not appropriate on Portland.

Our children are not here to speak out against this proposal. Both they and their children's health will potentially be put at risk over the next 30 years if approved. Do we want that risk to be our legacy to them? I hope not. We also must consider those people with existing health issues and how their physical and mental health may be affected.

Can we afford to risk the transferal of toxic particulates into the food chain from the 80mtr high stack, that may not be captured by the filter system within it, as they fall back onto the land and into the sea?

Last week I heard lots of talk about the health of the Port. But no talk about the health effects on the people of Portland and the workers within the port or the impact on Marine life and the thriving Aquaculture around our coast.

I can tell you that workers within the Port have expressed health concerns to me about the Fly ash, that will be produced by the incinerator and the carcinogens within it. The toxic ash may well be blowing around the port and into the sea as it is loaded in to ships for transporting elsewhere around the country.

The marine and bird life that surrounds the Dorset Coast from Studland to Portland Bill and including Chesil Beach and Lyme Bay is nationally important to the health of our oceans. As such it is protected by Marine Protection Areas, Marine Conservation Zones

and Special Areas of Conservation with Marine Components including birds.

Toxins entering marine chains can affect our migrating local fish, marine mammals and bird populations, Dolphins, shellfish, seaweed cultivation and salt production. The little terns on Chesil beach, that have due to conservation efforts made a remarkable comeback, will be affected through their consumption of local fish, as well as Brent geese, little egrets and all the other species that depend on our waters for marine life.

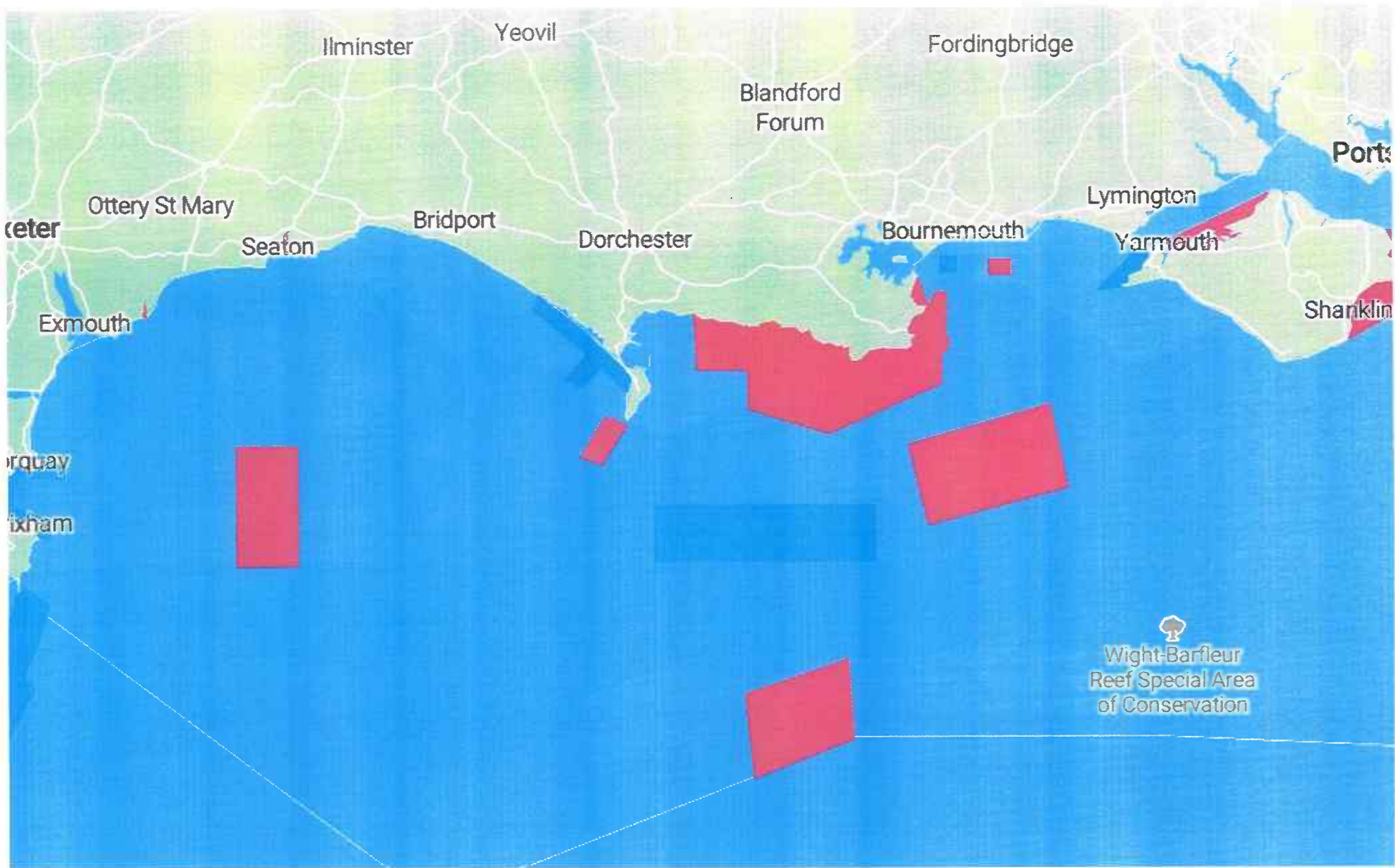
I believe monitoring and testing by the Marine Management Organisation, Centre of Environment Fisheries and DEFRA (Department for Food and Rural Affairs) will be required constantly to monitor the health of our fishing catches and wildlife should this planning appeal be granted. Who will fund this?

Recently I read a report on the bottle nose dolphins in the southwest that have been found to have high concentrations of toxins and other persistent organic pollutants within them. The EFW can only add to these problems and concentrate these chemicals within these much-loved species.

Local people are the front line of fishing, aquaculture and conservation, creating constructive collaborations and innovative solutions to our problems but I fear that their efforts will be negated if this EFW is approved, so I ask that you reject this appeal for the health of the people and wildlife of Portland.

Cllr. Rob Hughes Ward Member for Portland Dorset Council

14th December 2023





Hide

Search for a Marine Protected Area ...

ACTIVE LAYERS



5 km

lon: -2.229 lat: 50.533

Maintained by JNCC