

Suttle Stone Quarries
 Swanzworth Quarry
 Worth Matravers, Swanage
 Dorset
 BH19 3LE
 Tel: 01929 439444
 Fax: 01929 439446
 Email: info@suttles.co.uk

BCL Document Ref. OPL.SSO.Swh.MPS16.F1
 Digital Ref.
 Scaled for Reproduction at: A3L
 Version 1
 Technology Centre, Wolverhampton Science Park
 Wolverhampton, WV10 9RU
 tel: 01902 824111 fax: 01902 824112
 email: info@bchydro.co.uk
 www: http://www.bchydro.co.uk

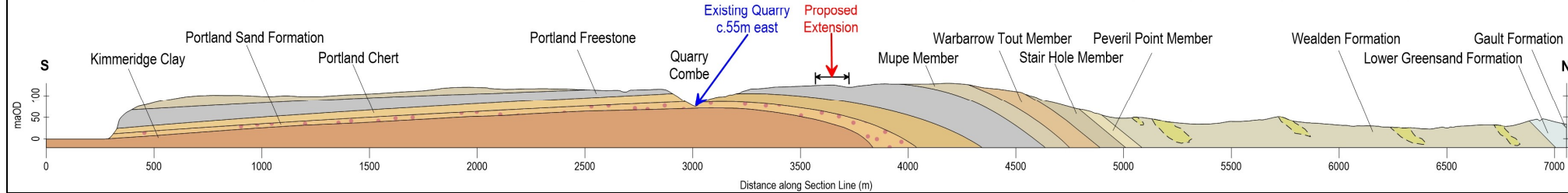
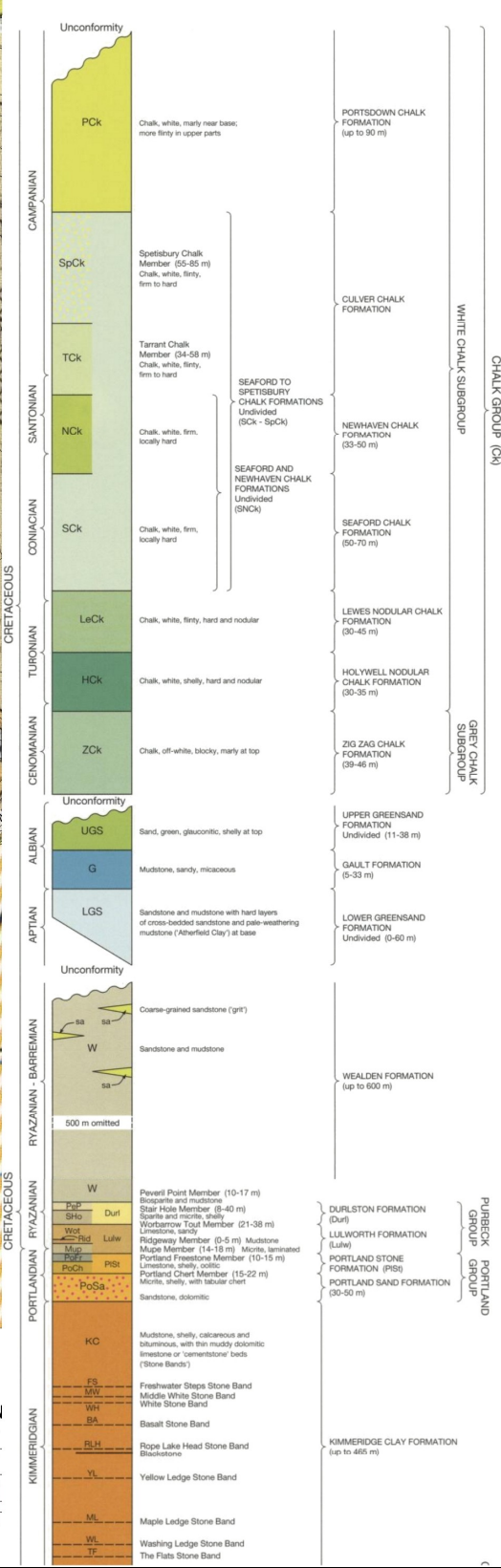
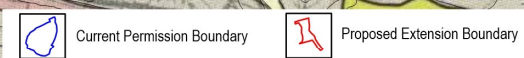
Suttles Stone Quarries
 Swanzworth Quarry, Worth Matravers, Dorset

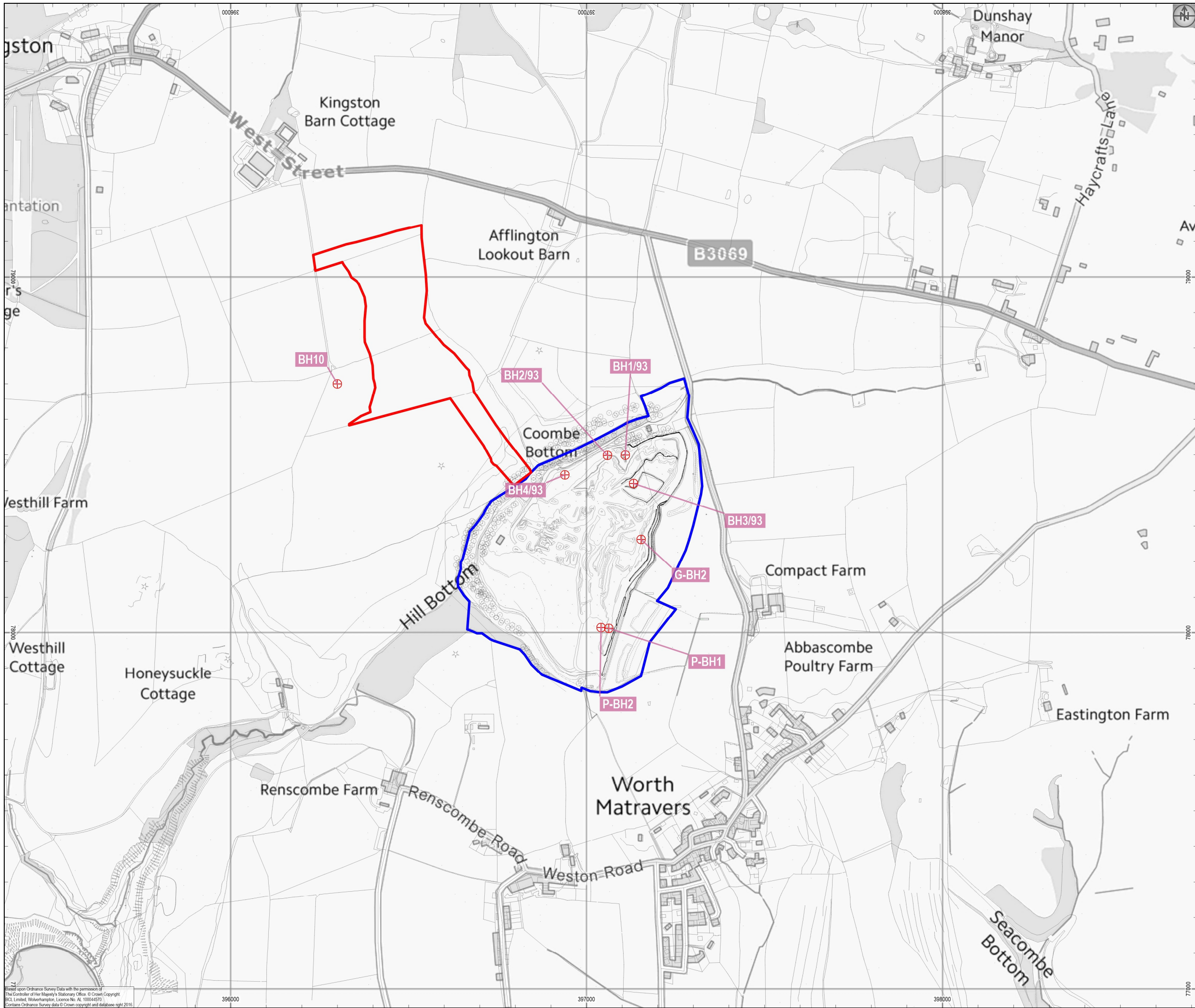
Consultation on the Bournemouth, Dorset & Poole Minerals Site Allocation Plan Swanzworth Quarry Extension (PK16)



Preliminary Hydrological & Hydrogeological Risk Assessment

Published Geological Mapping

Drawn By: GC Scale: 1:25,000
 Date: 16/12/16 Figure No. 5





-  Current Permission Boundary
-  Proposed Extension Boundary



Suttles Stone Quarries
 Swanworth Quarry
 Worth Matravers, Swanage
 Dorset
 BH19 3LE
 Tel: 01929 439444
 Fax: 01929 439446
 Email: info@suttles.co.uk

BCL Document Ref. OPL.SSQ.Swith.MPS16.F1
 Digital Ref.
 Scaled for Reproduction at: A3L

Version 1
 Technology Centre, Wolverhampton Science Park
 Wolverhampton, WV10 9RU
 tel: 01902 824111 fax: 01902 824112
 email: info@bclhydro.co.uk
 www: http://www.bclhydro.co.uk

Suttles Stone Quarries
 Swanworth Quarry, Worth Matravers, Dorset

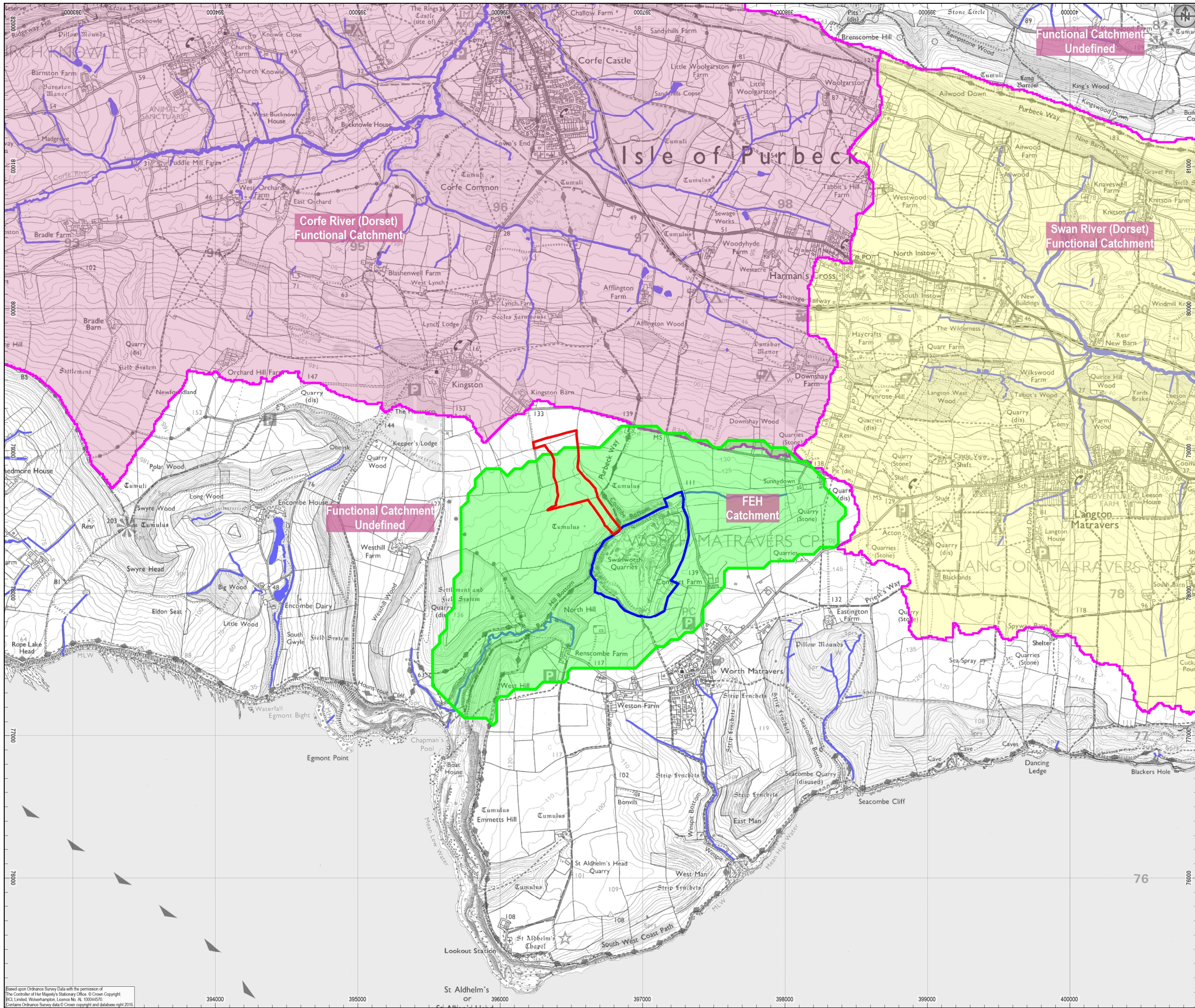
Consultation on the Bournemouth, Dorset & Poole Minerals Site Allocation Plan Swanworth Quarry Extension (PK16)



Preliminary Hydrological & Hydrogeological Risk Assessment

Historical Quarry Mineral Evaluation, Piezometer & Geotechnical Borehole Locations

Drawn By:	GC	Scale:	1:10,000
Date:	16/12/16	Figure No.:	6

Based upon Ordnance Survey data with the permission of The Controller of Her Majesty's Stationary Office. © Crown Copyright BCL Limited, Wolverhampton, Licence No. AL 100044570. Contains Ordnance Survey data © Crown copyright and database right 2016.



 Current Permission Boundary
 Proposed Extension Boundary



Suttles Stone Quarries
 Swanworth Quarry
 Worth Matravers, Swanage
 Dorset
 BH19 3LE
 Tel: 01929 439444
 Fax: 01929 439446
 Email: info@suttles.co.uk

BCL Document Ref. OPL.SSQ.Swth.MPS16.F1
 Digital Ref.
 Scaled for Reproduction at: A3L
 Version 1


 Technology Centre, Wolverhampton Science Park
 Wolverhampton, WV10 9RU
 tel: 01902 824111 fax: 01902 824112
 email: info@bclhydro.co.uk
 www: http://www.bclhydro.co.uk

Suttles Stone Quarries
 Swanworth Quarry, Worth Matravers, Dorset

Consultation on the Bournemouth, Dorset &
 Poole Minerals Site Allocation Plan Swanworth
 Quarry Extension (PK16)

Preliminary Hydrological & Hydrogeological
 Risk Assessment

Catchments, Water-courses & Water-bodies

Drawn By: GC Scale: 1:25,000
 Date: 16/12/16 Figure No. 7

Based upon Ordnance Survey Data with the permission of
 The Controller of Her Majesty's Stationery Office. © Crown Copyright.
 BCL Limited, Wolverhampton, Licence No. AL 100044570.
 Contains Ordnance Survey data © Crown copyright and database right 2016